

Mottram St. Andrew

MERCURY

ISSUE 183 FEB / MAR 2018



Sponsored by

HENSHAWS

01625 425425



The Bulls Head

Mottram St Andrew



The Bull's Head is a classic pub restaurant situated on the Wilmslow Rd in Mottram St Andrew, just a few miles from neighbouring Prestbury, Wilmslow and Alderley Edge.

With open fires, bookcases, good old furniture, prints, rugs and oak floors, with a lighter touch of plenty of plants, flowers and large outdoor sun terrace.

The Bull's Head has returned to its roots as a traditional country pub.

Our menu has a spine of freshly prepared, classic British dishes complimented by more exotic influences from other parts of the world - Modern British Cookery.

Our wine list has about 50 carefully chosen wines from all over the world, with plenty of choice of wines by the glass. You will also find available 5 cask ales and an impressive array of 50 Whiskeys to temp the tast buds.

Recommendations

Good Pub Guide2014

Good Pub Guide - New pub of the year2014

Opening times:

Day	Open	Food served
Monday	10:30am - 11pm	12noon - 10pm
Tuesday	10:30am - 11pm	12noon - 10pm
Wednesday	10:30am - 11pm	12noon - 10pm
Thursday	10:30am - 11pm	12noon - 10pm
Friday	10:30am - 11pm	12noon - 10pm
Saturday	10:30am - 11pm	12noon - 10pm
Sunday	10:30am - 10:30pm	12noon - 9:30pm



The Bulls Head, Wilmslow Road, Mottram St Andrew, SK10 4QH
Tel: 01625 828 111
Email: bulls.head@brunningandprice.co.uk
Web: www.bullshead-mottram.co.uk

The Parish Magazine of Mottram St. Andrew

Produced jointly by the Village Hall Committee and the Parish Council

ALICE ELEY (1933-2019)



“One who quietly got on with life - no fuss, no mither.”

Thank you to all who have sent cards of sympathy, messages of condolence, letters with lovely memories and all the phone calls - we have been overwhelmed with the response.

Our thanks also to the wonderful paramedics, staff and consultants on the wards and in the Intensive Care Unit at Macclesfield Hospital; some of the kindest and the most caring people you could ever wish to meet.

Much appreciated,

Malc, David, Lu + families

- Wishing you all peace and comfort as you remember Alice.

Inside this issue: Village Reports; Interview with local author, Kathryn Hughes; An interesting find from Diane Turner; and much more.

Thank you to Syd Blakeborough, who organises the advertisements that go into this magazine. The Editor would like to thank all the advertisers and the Henshaws for their continuing support.

Front Cover Photo: Inquisitive locals in Great Budworth, taken by the Editor

Peter  Pownall

Of

Mottram St. Andrew



Making Fine Furniture for 40 years



Peter Pownall Wood Design
Oak Road, Mottram St. Andrew, Macclesfield, SK10 4RA

Telephone 01625 829450

www.peterpownall.co.uk

Parish Council Chairman's Report

FIRST OF ALL, may I wish all residents of the parish a very happy New Year. We have enjoyed some un-seasonally mild weather over the Christmas and New Year break and whilst snow is beautiful to look at, I can't say I miss not having any.

By now work should have been completed on the alterations to the crossroads junction at Mill Lane and Lees Lane. Concerns had been raised about vehicles heading to Adlington 'undertaking' cars turning right into Mill Lane and putting at risk the lives of schoolchildren awaiting their bus. Undertaking should now not be possible and whilst it might mean minor delays while cars execute their right turn, the safety of pedestrians must be paramount.

Teams from Cheshire East have also been out recently picking roadside litter, sweeping previously un-swept roads and clearing fallen trees from verges. Your Parish Council has lobbied repeatedly for this work to be carried out and I would like to thank my fellow councillors for their efforts.

Openreach are continuing to lay fibre in the village and after the Alderley Edge cabinet was connected late last year, homes which connect to that

cabinet were offered fibre broadband. Those with whom I have spoken who took up the offer have enthused about the results. However, as Mottram St Andrew residents connect to one of four different cabinets, the others being in Prestbury and Wilmslow, not all subscribers can sign up for fibre just yet. However, work is ongoing this quarter to connect the two Prestbury cabinets and residents in post codes SK10 4LG and SK10 4RA should be able to connect before Easter. Fibre was being laid on the A538 Wilmslow Road during the week commencing January 7th and it may yet be the case that A538 residents in the postcode area SK10 4QH are offered a fibre connection before Easter too.

You may be aware that we are seeking two community-minded individuals to become councillors from May 2nd onwards. Do not hesitate to contact myself or the Clerk, Ron Taylor, if you would like more information.

Robert Hughes, Chairman
Mottram St. Andrew Parish Council

Rob Hughes:
robhughes2011@hotmail.co.uk
Ron Taylor: rontaylorllb@gmail.com

Mottram St. Andrew Methodists

ONCE AGAIN WE find ourselves looking back to what has been and hoping for the best for what is to come. We know that Christmas and the New Year 2019 was not an easy time for a number of families in our community and we take this opportunity to say we are still thinking and praying for you in the various circumstances you find yourselves in. For the majority of us however, it was 'business as usual', and we are pleased to say our Christmas Tree Festival at the end of November went very well, particularly on the Saturday where the chapel was filled several times as people came and went. Again we have to thank all those who took the time and trouble to take part, whether putting in a tree or helping decorate the chapel or supporting the event in any other way. We could not have done it without you. Particular thanks go to members of the Over Alderley Brass Band who played for us on the Saturday afternoon and for David Ricketts who played the organ for our 'Carols among the trees' on the Sunday.

The chapel was also full on 29th November for a very different reason, as friends and family gathered for a Service of Thanksgiving for Dennis

Meredith who sadly passed away on 11th November. Dennis was a devoted family man and a good friend to many and though perhaps not so widely known in the village as a whole, he was known to many anglers and served with distinction as Chairman of the Prince Albert Angling Society for many years. He will continue to be missed by everyone who knew him well and all will have many happy memories to remember him by. He was that kind of man.

As December got underway, our evening with the Macclesfield Salvation Army Band was entertaining as well as informative as we sang carols, and listened to our guest's thoughts and prayers interspersed with excerpts of their entertaining humour and a more serious account of the role of the Salvation Army in many troubled parts of the world. Closer to home, we have continued to support their food distribution initiative and a special collection of food items, generously added to by members of the WI enabled us to send a substantial quantity back with them to help boost their seasonal supply. All our following Christmas services, with the exception of the Christingle which, for some reason, failed to attract our expected

numbers, were well supported and it was good to see so many people in chapel on these occasions. It was great to see the children from the Primary Academy once again using the chapel for some of their seasonal events and to be able to share the special atmosphere the chapel evokes with a younger generation.

The year turned and we celebrated our Covenant Service early in January 2019 with Rev Sue Swires leading us and we shall see her again on a number of Sundays in the next few months and are particularly looking forward to welcoming her to lead our Ladies Day Service on Sunday 31st March at 9.30am.

The 'Crafty Club' continues to meet on the second and fourth Tuesdays

each month from 10am to 12noon. A wide range of crafts are represented and as with all our ventures new participants are always welcome. Finally, looking ahead with anticipation, we are gearing up for another of our famous evening Pudding Tasting events on Saturday 6th April in the Village Hall. A date for the diary not to be missed!

Ian Wright (Secretary) 583704



Mottram St. Andrew Primary Academy Head Teacher's Report

I HOPE THAT EVERYBODY had a good Christmas and New Year.

Although it seems a while ago, we finished last term by celebrating Christmas with a number of events and performances.

Our Christmas fair, in the village hall, was very well-attended and a

tremendous success. Over £3000 was raised, which makes a significant difference to resources we can purchase in school. We are all very grateful for the time, effort and enthusiasm of our PTA, and are currently updating our wish list for how we would like to spend the money.

The Christmas performances got off to a fantastic start with the Nativity performance by our Nursery and Reception classes. They performed The Jolly Christmas Postman, and every child was given an important part to play. This was the first time they have done their own performance, and I am sure it will become an annual tradition. The children all did a fantastic job, and it was very well-received by the audience.

Next, it was the turn of our Year 1 and Year 2 classes, who again did brilliantly. They performed Hosanna Rock, on stage in the village hall, and everybody was impressed with the standard of their production. Singing, dancing and acting were all performed confidently, and we were extremely proud of the children.

Finally, our Key Stage 2 children took part in Carol Services in the chapel. A mixture of traditional and modern carols were performed, and a number of children were confident enough to sing solos. The standard of music in our school is high, and this was evident in these performances.

Since returning from the Christmas break the children are all working hard, and we have a busy term ahead of us.

The deadline for applications for Reception places for September 2019

has passed, but if you know anyone who might be interested in a Nursery place for September 2019 then please ask them to email office@mottramacademy.org.uk to arrange to look around. We also have places in some of our other classes across school.

Visit our website
www.mottramacademy.org.uk
 Follow us on Twitter
 @Mottram_Academy

Jean Willerton (Head Teacher)



**Need a
Local Electrician?**

Call Keith Holland

01625 584615

07880 508916

Est. for 30 years

Join in!

Information on clubs and groups in the village.

Young People & Parents

Toddler Group Mondays 10:00-11:30 (Contact Katy Hatton 01625 590879)

Brownies Contact Katy Hatton 01625 590879

Guides Fridays 6-7:30 Contact Katy Hatton 01625 590879

Get Active

MSA Walkers Relaxed walks in the surrounding area with a friendly group. (Contact Katy Hatton 01625 590879)

Pilates with Heidi Cowan. Heidi leads a fun and friendly class, adapting each exercise to everyone's abilities. Come and have a free trial session! Mondays 12:0-13:00 (Contact Katy Hatton 01625 590879)

Bowling Club We continue playing indoor bowling over winter. Beginners welcome. (Contact Brian Slater 01625 828077)

Jive Thursdays 19:30 Beginners welcome. Visit the website for details - www.mottramjiveclub.org.uk.

More the Merrier!

Wednesday Club Every other Wednesday 14:00-16:00 (Contact Pauline Glancy 01625 262940 / 07731 483022 or Margaret Potts 01625 582154)

Social Club Tuesday, Thursday and Friday evenings from 20:00 with plenty of fun events, offering something for everyone. (Contact Mick Shaw 01625 584943)

The Women's Institute Inspiring women of MSA since 1948. First Monday of every month 19:30 (Contact Margaret Graham 01625 617054 or Anne Wilson 01625 250473)

Crafty Club Second Tuesday of every month 10:00-12:00 (Contact Margaret Graham 01625 617054)

ELECTRICIAN

Peter R Preston

Electrical Contractors

Tel 01625 421763

Mob: 07836 528468

Local, trustworthy and reliable

With over 36 years experience

FULLY INSURED

www.peterrprestonelectrical.co.uk



The Women's Institute

HAPPY NEW YEAR!

At our first meeting of 2019, Pete Graham the husband of our WI President Margaret gave a very interesting talk about the life of his father, Rick Graham, who was a Chelsea Pensioner. He'd had a very distinguished military career and, as a civilian, had settled in Macclesfield in 1964. His wife Hazel died in 1991, so he applied and was offered a place in the esteemed institution of the Royal Hospital Chelsea.

The Chelsea Pensioners, as they are known around the world, have called home their Christopher Wren designed hospital, in a 66 acre park, in Chelsea, since 1692. Originally just men were allowed but since 2009 ladies were admitted.

Founded by Charles II it took nearly ten years before it opened its doors to the first 476, veterans of the civil war. Since then there's been over 18,000 pensioners and all are easily recognisable in their bright and almost luminous scarlet uniforms. If you say to a pensioner that they are red you'll soon be put right.

Even back in 1692, each got their own private room, uniforms and

three meals a day. Rooms today are more like apartments, but all meet in the Great Hall for their meals, when they're not out being celebrities. Pensioners get invited to lots of things. Rick, in his first week rang home, so excited he could hardly talk. When he could, he said "I'm going to the Queen Mother's for my tea". That and many other engagements is the norm for a pensioner.

Nowadays the grounds are transformed once a year to welcome thousands of visitors to the RHS Chelsea Flower Show. Less known but very important to the pensioners is Founders Day, held each year, around the date of Charles II birthday, in June. The pensioners parade and are inspected by a member of the Royal family.

Pete's dad passed away in 2014, but in 2015, his brother Richard became a Chelsea Pensioner, carrying on this great tradition.

There are great tours of the Royal Hospital. If anyone is interested email tours@chelsea-pensioners.org.uk or telephone 0207 881 5493. In February we are hoping to support the "Green Heart" campaign to protect against climate change and take a personal challenge to reduce our carbon

footprint. Our little changes could help our world for future generations. We are hoping to see our members wearing a green knitted heart to support this campaign.

On the **20th February** we have entered a team into the **County Quiz** and we wish Pam, Christine, Pauline & Viv all the best and hope the questions are not too difficult! The first round is to be held at Mottram village hall so please come and support us from 7.30 onwards.

I have included a copy of our upcoming programme, if anything appeals to you then please come and enjoy an evening taster session, you are all very welcome.

On a sad note a former member Alice Eley passed away on 3rd January, she had been a lecturer at Reaseheath

The Upcoming WI Programme

February 4th

Prison Officer *Andy Platt*

Competition - Photograph Frame

March 4th

Members' Night

April 1st

Action for Children *Alysha Lawler*

Competition - Floral China with Springtime Theme

May 13th

Resolutions Night - Beetle Drive

Competition - Teapot

College and had also worked in Canada. Alice was heavily involved with the WI and designed the mural in our village hall and helped produce our WI tablecloth which is still used at every meeting. She was a previous captain of the bowling team, dealing with accounts and organising events and dinners for them. A minutes silence was held in her memory at our January meeting.

Our monthly film Group meet at MSA Methodist Church – please see the village notice board for upcoming dates and times. Everyone is welcome and we serve tea and cakes – Entrance £3.

For more information about your local WI contact Margaret Graham 01625 617054 or Anne Wilson 01625 250473

Anne Wilson (Secretary)



Ricky Graham in his famous uniform

Bowling Club

THE 2018 CROWN Green Bowling Season has now well and truly finished and all our members will be looking forward to the commencement of 2019's season. If anyone fancies giving Crown Green Bowling a try this year please contact me – I'd be delighted to hear from you.

Our presentation evening is scheduled for the evening of Saturday 16 March at the village hall where we shall have the same format as in previous years - A quiz, hot fayre from outside caterers and the presentation of the trophies to all competition winners. Prior to this team dinners are being arranged by the respective captains and vice captains. All players will be notified by their captains in due course.

As previously communicated, one of our members has written, and had published, the story of Mottram

Bowling Club to mark the club's 35th anniversary. This is a well documented 54 page history from humble beginnings where local members and residents (after an extortionate quote) joined together and decided to build the green and later the pavilion themselves. Tales and photographs from the start to present day make this not only an interesting read but part of Mottram St Andrew's social history. We are down to our last 12 copies so if you would like to purchase one for £5 please contact Brian Slater on 01625 828077.

Members still meet on Tuesday evenings at the village hall to play indoor bowls so if anyone fancies giving this a try pop along to the hall from 7pm – you'll be met by a friendly group of folk, a cuppa, a chat and an introduction to the sport.

Jill Hillary (01625 820244)



BARRY A. WICKS

Interior and Exterior Painter and Decorator

Contract work undertaken
Free Estimates

01260 270714 / 07769 681252

12 Swaledale Avenue, Congleton, Cheshire, CW12 2BY

We insure it. You enjoy it.

0000
BESPOKE
THE NFU MUTUAL
INSURANCE COLLECTION

It's no surprise that over 95% of our NFU Mutual Bespoke Home Insurance customers choose to stay with us.

NFU Mutual Bespoke Home Insurance is specially designed to cover larger properties and more complex insurance needs with contents valued from £100,000.

For more details, speak to India Lawrenson on 01625 422 874
#mail_macclesfield@nfumutual.co.uk or visit us at
1 Maple Court, Davenport Street, Macclesfield,
Cheshire, SK10 1JE



nfum_macclesfield



NFU Mutual
INSURANCE | PENSIONS | INVESTMENTS

Our Agents are appointed representatives of The National Farmers Union Mutual Insurance Society Limited (No. 14982), Registered in England. Registered Office: Tiddington Road, Stratford upon Avon, Warwickshire, CV37 7BJ. Authorised by the Prudential Regulation Authority and regulated by the Financial Conduct Authority and the Prudential Regulation Authority. A member of the Association of British Insurers.

For security and training purposes, telephone calls may be recorded and monitored.

© 2017 NFU

An independent travel agent with 30 years' experience based locally in Mottram St Andrew. Whether it is a beach holiday in Mauritius, a cruise around the Caribbean or a multi-centre adventure in the Far East, I would be delighted to share my knowledge and help you plan your truly Bespoke Holiday. I can meet you for a coffee, chat on the phone or, if you lead a busy life, we can just correspond by email.

Recent Customer Experiences on Feefo

"Bespoke Holidays always deliver 5 star dream holidays." - W Hanley



BESPOKE HOLIDAYS

Tailor-Made | Bespoke | Luxury | Affordable



Helen Powell



sales@bespokeholidays.com



www.bespokeholidays.com



[/bespokeholidayshelenpowell](https://www.facebook.com/bespokeholidayshelenpowell)



01625 568800



Social Club

HAPPY NEW YEAR to you.

Here we are in 2019 and ready for a brand new year. We had a fantastic time at our Christmas Clubnight extravaganza. Audrey had us all in fits of laughter for the evening and Rachel did us proud with her delicious festive food. OK, so the balloon animals didn't go too well but everyone seemed to enjoy firing the balloons around the room. I missed Christmas Day in the Club as we were away for a change. By all accounts it was a busy one with people bringing their families down to the club. Special thanks to Lucy for running the bar this year.

Forthcoming Events

Next Curry Nights will be Tuesday 26th February (no curried pancakes) and Tuesday 26th March from 7.30pm. Ensure your name is on the list by the Tuesday before to avoid disappointment.

Some great music events going on this year with the regular Music at Mottram events, Pilgrims Way on 2nd February, Sam Kelly Trio on 2nd March and Steve Tilston and Jez Lowe on 30th March. Later on we have the music of Simon and Garfunkel on 27th April. Tickets are

sure to go fast for all these events, so book early to avoid disappointment (see adverts in this issue for ticket details).

The Club is open Tuesday, Thursday and Friday evenings from 8pm and you would be most welcome to join us.

Don't forget it is now time to pay your membership subs of £10 to Sheila Cavanagh or you can pay over the Social Club bar. You will be receiving your annual AGM invite through the post or by email over the coming days so please ensure that Sheila has your current address or email.

Cheers,
Mick Shaw

Keep up to date on the website:
www.mottramstandrew.com/social-club

PARROTT'S OF CHESHIRE LTD

Accounts prepared and self-assessment tax returns submitted for sole traders, partnerships and limited companies.

**HAROLD PARROTT B.Com ACIS
Contact on**

T: 01625 618920 M: 07946 514911

E: parrottsofcheshire@tiscali.co.uk

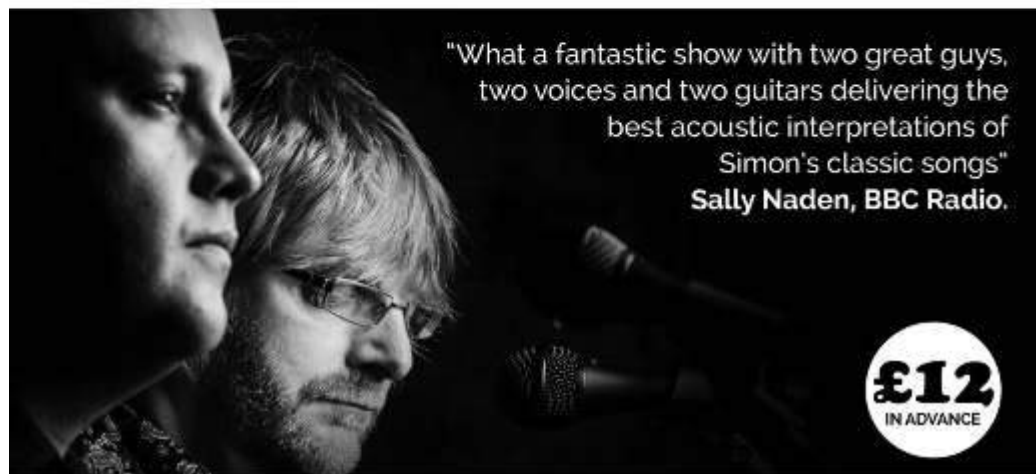
www.parrottsofcheshire.com

2019
DATE

A CELEBRATION OF

AS HEARD ON
BBC RADIO

SIMON & GARFUNKEL



"What a fantastic show with two great guys,
two voices and two guitars delivering the
best acoustic interpretations of
Simon's classic songs"
Sally Naden, BBC Radio.

£12
IN ADVANCE

PERFORMED LIVE BY TIM CHU & IAN BAILEY

Saturday 27th April

Mottram St Andrew
Village Hall SK10 4QP

COMING SOON

TICKET DETAILS & INFORMATION TO FOLLOW

www.classicsingersongwriters.co.uk/sandg

MSA Brownies

THE FIRST TERM of Brownies was taken up with work on 3 Badges namely Home Safety, Number Fun and Disability Awareness. All these badges included Making Bird Feeders planting acorns (which we hope will grow). We learnt how to sign language for the deaf, we talked about other disabilities including taking a wheel chair around an obstacle course. The girls really enjoyed this work.

The second half of the term has been taken up with the girls doing a poster to encourage other Brownies to come and join us, The winning poster was chosen by themselves and drawn by Poppy Pickup. This poster will be displayed in numerous places around the area.

Over all it has been great fun and we are looking forward to this term.

Pauline Malcolmson

HATCH TREE SURGEONS



- All aspects of tree work
- Fully insured
- Free quotations
- Emergency call out
- Free advice
- All work to BS3998

- Tree felling
- Crown reduction
- Section felling
- Crown thinning

- Stump removal
- Wood chipping
- Split logs
- No job too big



Goose Green Farm
Oak Road
Mottram St. Andrew
Macclesfield, Cheshire
SK10 4RA
www.goosegreenfarm.com
info@goosegreenfarm.com

Tel/Fax: 01625 828814

Mobile: 07715210184

The Untidy Gardener

Notes from an untidy garden by Ian Wright

FEBRUARY IS MY least favourite month; it seems so full of promise with the daylight lasting longer and the spring bulbs, heralded by the snowdrops, getting underway with their springtime extravaganza. Then all seems to stop for the proverbial, and almost inevitable, 'cold snap' which stops everything in its tracks including the gardener. The garden however, continues to provide interest and perhaps especially in the colder spells the visitors to it seem more noticeable and, for the most part, welcome.

Our gardens have their boundaries, be it with hedge, fence or wall but nature takes little notice of such man-made structures and can fly, climb, crawl or walk its way in whether they are welcome or not. Birds in particular are the most obvious frequent guests in winter weather and always interesting to watch. In some cases they seem braver when its cold and some can become quite tame, particularly the robin. At the first sight of anything being done in the garden the robin will be there looking for titbits to eat, occasionally grabbing a mouthful of worm which it would seem impossible for it to eat but manages it. At first sight they can seem a peaceful and friendly bird but that's as long as you are not another robin invader when

they can fight to the death. It is said that if you see two robins together they are a pair, though they are less territorial in really severe conditions and a bit more magnanimous in sharing what food is available. If you are patient enough they can be encouraged to feed on mealworms held in the hand, as satisfying an encounter with a wild creature as can be imagined if you can but gain their trust.

The bird feeders too are frequented by many species, particularly the tit family and in the case of the Long Tailed Tit 'family' is everything and there may be a dozen of them on the feeders at the same time. They are joined at times by house sparrows, goldfinches, dunnocks and the occasional woodpecker. And creeping about in the undergrowth (this is our garden I'm writing about!), are the resident wrens. There are the larger birds too; the pigeon, Jackdaw, magpie, collared dove and Jay which (to my mind at least), are too expensive to feed on anything other than the scraps left by the smaller birds. Consequently our feeders are enveloped in wire cages or, in some cases, two wire hanging baskets connected together to form a protective ball.

Resident Squirrel can't get in there either, though helps himself (or herself!), to the peanuts which is allowed if only

for the amusement value of seeing it negotiate the various obstacles which have been deployed to try to prevent it. It was with some satisfaction however, to see it feeding on the pine kernels on the pine tree across the lawn from the house; a more natural part of its diet and giving the peanuts a break!

As well as the very artificial feeders, the garden also supplies berries in season, with cotoneaster, pyracantha and ivy in particular providing much needed

sustenance to blackbirds, thrushes and the occasional redwing visitor. As we move (thankfully!) into March the crocus begin to flower and whenever the sun shines enough to tempt them out, provide pollen and nectar for our other early winged visitors, the honey bees and the white tailed bumble bee. These, along with the ever widening range of spring bulbs and their encouraging colour, and the first notes of the dawn chorus, are a real sign that spring is on the way. ◇



A friendly robin by Ian's daughter, Katie



The resident squirrel

Albert R Slack Ltd & JW Brocklehurst Ltd
Funeral Directors & Monumental Masons

Independent Family Businesses Since 1853

*Working together to serve the communities of
Wilmslow, Alderley Edge, Prestbury, Bollington & Macclesfield.*



Albert R Slack Ltd 84 South Oak Lane, Wilmslow, SK9 6AT. **01625 525063**
JW Brocklehurst Ltd 17 Macclesfield Road, Prestbury, SK10 4BW. **01625 829232**

www.cheshirefunerals.co.uk



Golden Charter
Funeral Directors





kimble roden
ARCHITECTS

Residential Design Experts

Creating Space for you to Enjoy...

Kimble Roden are a design focussed architects' practice passionate about bringing the highest levels of design to residential projects.

We will:-

*Obtain **planning permission** and building regulation approval using our wealth of experience*

*Explore all your design options **before** work starts on site.*

*Design **every** element of the work internally and externally to ensure you achieve the quality finished home you dream of.*

*Use our expertise to obtain **fixed quotes** from recommended builders and then let us oversee their appointment.*

*Oversee your builders work and progress to ensure you **stay in control** of costs and time.*



*Contact Emma or Edwina Tel: 01625 402442/ Mob: 07762 363952
Or visit our website: www.kimbleroden.co.uk*

Norbury's

84 Chestergate, Macclesfield, SK11 6DU

**LAWNMOWER
SALES
SERVICE
REPAIRS
SHEARS REGROUND**



Dealers for

Flymo, Hayter, Honda, Lawnflite, Qualcast and ATCO
STIHL Main Agent

Telephone: 01625 425330

Goose Green Farm

Bed & Breakfast



Welcome to our Prize winning Pedigree Beef farm.
Set in beautiful countryside with panoramic views.
Just off the A538 between Wilmslow & Prestbury.
Within easy reach of the M6, M56, M60 and
Manchester Airport.
Own Course fishing Lakes.
Comfortable and homely with log fire in guest lounge.
Separate dining room.
Double, Twin and Single en-suite rooms.
TV, Central heating, free Wi-fi,
Tea and coffee making facilities.



Credit Cards Accepted
No smoking



Goose Green Farm, Oak Road, Mottram St. Andrew, Macclesfield, Cheshire, SK10 4RA

Dyllis Hatch Tel: 01625 828814 / Mobile: 07721024493

Email: Info@goosegreenfarm.com Web: www.goosegreenfarm.com

Way Back When... Kirkleyditch

Barbara Newton has kindly shared an article from the Cheshire Life Magazine in 1981 (by Susan Stafford), telling the fascinating story of Kirkleyditch Common.



To a motorist, it may simply mean a rather awkward bottleneck on Oak Road, Mottram St. Andrew, but this small cluster of dwellings where the large three-storey Corner House juts out into the road towards the cottage on the other side, is a remarkably interesting little settlement. Kirkleyditch Common is the name marked on the map, Kirkleyditch itself being centred on the triangle bounded by Moss Lane, Priest Lane and Wilmslow Old Road, just midway between Prestbury and Alderley Edge.

In times gone by, this must have been quite a busy little industrial community, for there was a quarry on Kirkleyditch Common, and the copper mine as well. It was here that Professor Roscoe of Manchester found the material for his research on vanadium, his best-known contribution to chemistry. This light-grey metal, used as an alloying metal in steels, had originally been discovered by Del Rio in 1801, rediscovered by Sefstrom in 1830, and first isolated from its compound by Roscoe in 1868, the ore being given the name of Mottramite.

The modern houses which now stand along Oak Road have a fine view of the wooded ridge of Alderley Edge with its better known copper mines, and one or two of them preserve in their names these old industrial associations, for there you will find Quarry Cottage, standing next to Copperfields, not an allusion to David of that ilk, but a name that means literally what it says. Another old house-name here on the fringe of Kirkleyditch common is Commonend.

The original cluster of old cottages round the former wheelwright's shop is quite picturesque, an irregular little huddle of dwellings with stretches of cobblestones before their doors. The wheelwright's shop itself must have been important in its day, for the wright was a most necessary figure in the community, not only building wagons and carts but also doing general carpentry of all kinds for farm and home: harrows, troughs, mangers, feeding racks, barrows, wooden pumps, ladders, field-gates, coffins all proceeded from this versatile village craftsman.

Perhaps few realise that in the garden behind the wheelwright's shop is an old graveyard, established by the Baptists of Great Warford in 1689. There are still

one or two of the old flat gravestones set in the grass, the oldest dating from 1701. Great Warford Chapel, which is extremely tiny and also extremely picturesque, is one of the oldest Nonconformist places of worship in England, not merely in Cheshire, owing its origin to prayer meetings which began in the local farm house during the Civil Wars. It is not clear why the Warford Baptists should have acquired a burial ground at such a distance, for the Mottram graveyard must be four or five miles away - unless perhaps as a central site that would serve for other local groups as well. However, acquire it they did, for " a rent of one peppercorn annually at the Feast of St John the Baptist if demanded, upon trust that the said parcel of land shall be used, employed and disposed of for the burial of all or every, or any person whoever, that shall depart this life and in their lifetime desire to be buried there." No one has in fact been buried in the Mottram graveyard since 1866.

Mr. Edward Cliffe of Oak Cottage, in whose garden the graveyard is situated, has looked after it for fifty years with loving care, planting and trimming the thick hollyhedge which shelters it and keeping the grass around the gravestones mown. He and Mrs Cliffe told me of the annual service which local Baptists used to hold in the graveyard: they had a small American organ which they carried out of doors for the occasion, while benches for the congregation were borrowed from the nearby Methodist chapel. But these services came to an end after a series of very wet occasions and with the rise of a younger generation. Mr and Mrs Cliff recalled entertaining in the early days the Baptists' four trustees, the youngest of whom was a mere ninety!

They have lived in Oak Cottage since 1930 and have wonderful tales to tell of the Mottram of half a century ago. When they first lived there the present Oak Road was not in existence: there was simply a rough cart track leading to the two farms and five cottages which made up the little hamlet. There was no electricity of course and their water they carried either from a well on Priest Lane or from the public pump near the Bull's Head, until the farmer at Goose Green invited them to share his supply which came from Hare Hill. Until 1932 there was a windmill at the corner of the present Oak Road which pumped water for the community and was maintained by the Wrights of Mottram Hall. The site of the old quarry and copper mines - "The Gravel Holes" - was then a pretty little wilderness with pools and flowers and fine grasses, where all the children played.

The article will continue in the next issue.

M **D**AVENPORT BUILDERS LIMITED

Quality builder with over 30 years experience

M.Davenport Builders Ltd began as a small joinery firm in 1977, founded by Mark Davenport.

It is now one of the most respected independent building firms in the Stockport and Cheshire areas.

With over 20 full-time experienced employees and a fleet of company owned vehicles, all clients can be assured of quality workmanship and the utmost professionalism throughout the duration of their job. All sites are overseen daily by Mark and his business partner Jon, who are on call whenever a client needs them.

M.Davenport Builders Ltd has been a member of the National House-Building Council (NHBC) for over 20 years. The NHBC is the leading standards setter for UK house-building, which established an approved housebuilder register - of which we are proud to be a member.

For any enquiries, please get in touch with Mark

Services

- House building
- Extensions
- Large-scale alterations
- Conservatories
- Spas and Swimming pools
- Re-roofing
- Driveways
- Outhouses
- Garages
- Porches
- Landscaping



0161 439 4051

mark@mdavenportbuilders.co.uk

www.mdavenportbuilders.co.uk

Extracts from Beth Gardom's Diary - 1992

Beth and Reg Gardom lived in Mottram for over 50 years and immersed themselves in village life. Thank you to **Jill Hillary** for sharing Beth's diary, which will surely bring back fond memories for some and a fascinating insight for others.

Sunday 19 January

From the Mail on Sunday (John Junor)

Even now, my mouth waters when I think of the meal I had in Cheshire last week when, driving with a colleague, we stopped off for a quick bite in the village of Prestbury. The inn was old and timbered, warm and snug. The room in which they were serving the snack lunches was in character with the rest of the place. Comfortable. Scrupulously clean. The menu was simple but there was waitress service. What did I have to eat? Two sizzling hot sausages in a soft white buttered bap followed by home-made apple pie and ice cream. The total cost was just £2.65. I wrote last week about the wonders and cheapness of food in Normandy. I have to tell you it isn't all that bad in the North of England either.

Was this the Bridge or The Legh Arms?

Sunday 23 February

The pond is boiling with frog spawn. A kestrel and sparrow hawk were hovering over the garden most of the afternoon so there were no birds about.

Saturday 29 February

Leap Year Day. A pair of collared doves here today – I do hope they return soon.

Wednesday 11 March

Very "lively" Village Hall AGM with over 100 present. The meeting was quite stormy. Eventually we did vote (from 17 names to elect 11) for the 1992 Committee. The "Old Guard" were elected again.

Sunday 15 March

Annie and Herbert called in the afternoon. What a nice couple they are. Herbert has taken to wearing enormous white trainers (even with a suit). I suppose his feet are bothering him, but why white?

Wednesday 8 April

Betty Carr and I are planning a coffee morning to tell what progress Mottram St Andrew is making towards paying for a Guide Dog (£1,000). Lynda Gregory goes for her dog soon – in about two weeks I think.

Sunday 12 April

I always enjoy watching the Marathon. Nicola Cavanagh's friend is running for Lynda's Guide Dog. (He did finish, so I owe him £25). Lynda is going for the guide dog next week. When all collected, Michael announced that £465 was raised for our Mottram dog. There are also two competitions on the go. I think we are doing quite well.

Sunday 10 May

White Family Bowls Cup at 1:30pm. Rain as well as sun and we had to stop for a while but all enjoyed it very much.

Saturday 30 May

Guide Dog Coffee Morning at Thornlea. (Be there 9am). Made £113 – have reached £1,000.

I get so frustratedly angry when I see (not read – I do not read them) the newspaper articles about the Prince and Princess of Wales. It must be hell to fulfil public engagements under the circumstances – Perhaps, like myself, they just do not read those pages. I do hope not.

Sunday 7 June

Ladies Cup Bowls 2pm. It was so HOT up at the green. Phyllis won.

Saturday 13 June

Reg to Anglesey with the bowlers. They had lovely weather for their trip and all agreed it was a great day. Reg got home at 10:00pm and had left earlier in the day at 8:30am.

Sunday 21 June

The Village Hall was broken into last night. Burglar alarm smashed outside and inside; shutter of bar smashed; spirits taken and money from snooker etc.

Monday 22 June

Reg to Cash and Carry with Sheila Cavanagh to replenish stocks.

Saturday 27 June

Woodford Air Show – it didn't seem as good as usual – the Arrows made a lot of noise. We heard afterwards The Spitfire crashed. "You could hear the plane's engine was cutting out, said one man who saw the crash. "Then it went into the loop and just couldn't pull out of it."

Sunday 28 June

Reg's birthday. He is 68!!

Battle to keep Vulcan flying

Aviation enthusiasts have launched a campaign to keep the RAF's last Vulcan bomber in the air. The Mail on Sunday was inundated with calls after revealing last week that the Defence Ministry proposed selling the delta-winged plane.

Saturday 25 July

Watched opening ceremony of Olympics. The costumes were fantastic but the singing and dancing went on far too long.

Tuesday 4 August

Club night tonight was a Surprise Party for Reg. Music, food, a few speeches, presentation of a cut glass bowl for him and of flowers for me. A very happy evening.

Wednesday 19 August

Electricity off 0730 to 1230.

Village Hall "Evening in Nepal" – quite interesting.

Sunday 23 August

Norbury (Pairs) Cup – much broken up by heavy rain. Syd and Marjorie won. We all enjoyed it.

LAND WANTED

**Henshaws are currently looking for land for
a new Recycling Centre**

**Ideally around 2 - 6 acres,
but open to other suggestions**



Please Call 07810 75 00 00



MOTTRAM HALL
Cheshire

Cheshire's finest Afternoon Tea

Indisputably one of the finest hotels in Cheshire, Mottram Hall is exclusively nestled in 270 acres of rolling countryside. Standing proud in Cheshire's golden triangle, sumptuous and tastefully traditional, it's a picture of elegance.

Afternoon Tea at Mottram Hall is a beautiful ritual; a celebration of tea and its theatre. It's the perfect way to spend an afternoon with a loved one or celebrate a special occasion with a group of friends.

Why not make your experience even more memorable by enjoying Champagne Afternoon Tea for just £30.00pp or Veuve Clicquot Afternoon Tea for only £35.00pp.

Available all week from
12pm – 4pm

CHESHIRE'S FINEST

Afternoon tea

A reservation is required, to book
Call 01625 828 135 | www.mottramhall.com
Wilmslow Road, Mottram St Andrew, Cheshire, SK10 4QT

Cage Collection Service

Our prompt and professional cage collection service is an ideal and cost-effective alternative to hiring a skip.



It is ideal for the removal of large bulky unwanted furniture, such as beds, suites, wardrobes etc.

We'll arrive within an agreed time slot and take your rubbish away.

Furniture Removal Carboard Collection

Henshaws Envirocare



01625 425 425

Saturday 19 September

Nasty grey, wet day for Chapel Garden Party but they made nearly £300.

Sunday 4 October

A jumbo plane – heavy with fuel – crashed into block of flats in Amsterdam. Fatalities were 43, mainly residents of the flats.

Sunday 25 October

It has been a half century of great upheaval. So it's reassuring to know that some things don't change. The Queen Mother's smile is as warm now as it was back in 1935.

Through wars, bereavement and royal marriage crises old and new, she has kept the cheery disposition which captivated generations.

How unhappy she must be during the present disgraceful coverage of the "Wales" marriage.

Thursday 5 November

The bonfire at the Village Hall went very well. I was at Bobby's. Her little dogs barked all the time. There was excitement at ICI Lostock with a fire and a cloud of toxic gas but all was well after a few hours. The Village Hall bonfire made a profit of £550.

Friday 20 November

Fire broke out at Windsor castle. We later heard it started in the Queen's private chapel by a curtain that went up in flames.

Saturday 28 November

Chapel coffee morning – made over £300.

Wednesday 9 December

The Palace Statement

It is announced from Buckingham Palace that, with regret, the Prince and Princess of Wales have decided to separate.

How sad this is. And "the media" out to be shot.

Friday 11 December

Christmas Dance at the Village Hall. It was a good do. How I wished we could still dance like we used to.

Princess Anne remarried today.

Tuesday 15 December

A nice Christmas Club night (especially for Rose, who won the Bingo - £22 – and also £50 in the weekly draw!)

Tuesday 22 December

Club Draw. We had 18 prizes – felt we had done quite well.

Thursday 31 December

An extra honour for Macclesfield Leisure Centre, which for ten years won energy conservation awards and attracted foreign experts wishing to match its phenomenally low electricity consumption. North Western Electricity then discovered an incorrectly installed meter had been undercharging by about 50 per cent and presented the centre with a corrected bill for £205,000.

An Interesting Find in Mottram!



I am new to metal detecting and on my first outing I found a Livery button (pictured) in the field behind the Bulls Head.

It depicts the crest of the Wright family 1738-1922 of Mottram Hall.

It was probably part of the tunic worn by the estate workers and lost during some frivolity after a drinking session in the public house!

Or maybe during the practice of 'shoddy', where worn garments would be cut up and disposed of on land which would enrich the soil.

I have had other interesting finds from this field including a medieval love token, part of a Georgian silver shoe buckle and a range of pennies and farthings.

If anyone has land and would like me to yield some finds I would be glad to hear from them and would of course share the proceeds from the Mottram hoard!

Diane Turner

Contact mobile no : 077-4800-1471

WINDOW CLEANER

J. Fowler & Sons

Tel 01625 617903

Mob: 07803 612316

A local family business for over 100 years

FULLY INSURED

Window cleaning and Gutters cleaning

CHIROPODIST

Christine Lambert

State registered M.Ch.S, S.R.Ch

Tel 07967 633371

No Extra Charge for home visits

Friendly and professional advice and treatment on a wide variety of foot problems including corn and callus removal, Nail cutting, Verrucae, Warts & In-grown toenails.

Nursing Home visits available
Day, Evening or Weekend Appointments

Mercury Meets...

Kathryn Hughes

Who are you and what do you do?

I'm Kathryn Hughes and the author of three books - The Letter, The Secret, and The Key.

I am an accidental author. I'd always wanted to write a book but I didn't always want to be an author. I was very fortunate in that my first self-published book, The Letter, was picked up by a major UK publisher but I didn't realise then that one-book deals are practically unheard of. I have since had two further books, The Secret and The Key published by Headline and am just in the process of editing Book 4.

Who inspired you to become an author?

I've always been in awe of people who can tell a good yarn. My favourite author when I was a teenager was the peerless Sidney Sheldon. He knew how to keep readers turning the pages.

What is the best thing about what you do?

Being my own boss, not having to get dressed to go out to work. I can wear the same shirt three days

running and nobody cares. Well, maybe my husband cares!

What is the biggest challenge?

The self-discipline needed to work to a deadline, a deadline set by my publishers.

What is your writing strategy? Do you write a whole book in one go or is there a method you use?

I start first with a premise, decide on the time period and then add the characters. I will know how the book begins and how it will end. It's the pesky ninety thousand words in between that's difficult. I will write as many drafts as necessary but at some point, I really have to call it a day and send it to my editor. She will doubtless have some comments/suggestions and another one or two drafts will follow.

Any advice for aspiring writers?

- Just write. It may sound obvious but if you don't write anything down, then you've nothing to edit, nothing to improve upon.
- Set yourself a word target each day. If you exceed this target, then consider yourself

'A wonderful, enthralling story'
Lesley Pearse



THE KEY

A hidden note. A lost love. A second chance.

Kathryn Hughes

an over-achiever and reward yourself with a day off.

- Think about this tip from Elmore Leonard. 'Try not to write the parts people tend to skip!' I love that.
- Employ the BOSHOK method. Bum On Seat, Hands On Keyboard.
- Develop a rhino-skin because you'll need it to cope with all the rejections, which you can either laugh at or learn from. Whatever keeps you sane.

What works for me, may not work for you, so feel free to ignore all of the above.

What would be your dream come true?

To see one of my books adapted for the screen. Don't think I haven't fantasised about it either! I've casted out the whole production in my head. I've had a glimmer of what this might be like because the Audible version of *The Key* is narrated by Joanne Froggatt (*Downton Abbey*), and she really brings the book to life.

Do you have a favourite book / author?

I am a great admirer of Nicholas Evans, Khaled Hosseini and of course Sidney Sheldon. If I was

forced to choose just one favourite book, then it would be George Orwell's *Animal Farm*. I was required to read it at school for O Level and our teacher would stand at the front and lead us all in a rendition of *Beasts of England* before the lesson began. A political satire it may be, but it's also an entertaining and somewhat tragic story to be enjoyed on many levels.

What were you like at school?

Talkative, hopeless at Maths, hated Netball. However, there was a sign up in our corridor which read 'School Days are the Best Days of your Life' and I would tend to agree with that!

Thank you Kathryn!

*Kathryn's books **The Letter**, **The Secret** and **The Key**, are all published by **Headline**.*



ARTHUR BURNS & SON (CONTRACTORS)

A Family business in the Alderley Area for over 100 years

**Suppliers of Newly Quarried Imported and Reclaimed Natural Stone Paving
Crazy Paving - Walling & Coping Stone - Granite Setts and Railway Sleepers**

SELF-DRIVE MINI EXCAVATORS FOR HIRE

Also: Reclaimed Cheshire Bricks • Road Cobbles • Stone Troughs and Sinks
Chimney Pots • Top Quality Topsoil • Sands • Gravel & Aggregates

Natural stone flags supplied to Borough of Macclesfield, can be viewed locally at the Christchurch development and Town Hall, Macclesfield and more recently, Henshall Road and Palmerston Street, Bollington.

Tel: 01625 582338

www.arthurburns.com www.arthurburns.co.uk

Deliveries to local & Cheshire area - yard sale welcome

“Woodend”, Prestbury Road, Over Alderley, Nr Macclesfield, Cheshire, SK10 4SJ

WIZARD GARDEN SERVICES

Established 1984

Maintenance & landscape contractors

- Garden Maintenance
- Garden Tidy Ups
- Hedge Cutting
- Design Service

**Ponds, Waterfalls, Trees,
Shrubs and Hedging at
Trade Prices**

- Turfing
- Seeding
- Paving
- Fencing
- Planting

SPECIALISTS in water features and extensive lawncare programmes

FREE ADVICE AND WRITTEN QUOTATIONS

Gary Fletcher NCG (Horticulture & Turf Culture)

Tel No: 01625 501264 / 828718

Mobile No: 07798 901730



🐾 Potty Paw's Animal care 🐾

home from home pet care
Mottram St Andrew
Tel: 07920 118599

Computer problems? Here's the solution:

Call the friendly service dedicated
to home & small business users!



Paul and Jan
Truswell



A PROFESSIONAL PARTNERSHIP WITH OVER
40 YEARS JOINT EXPERIENCE SUPPORTING I.T.

Real people offering real help.

freedom
computer services

01625 26 25 26 fcits.co.uk

We are a Wilmslow based, family owned
veterinary practice specialising in domestic pets.

BIG OR SMALL WE CARE FOR THEM ALL.


THE VETS' PLACE
VETERINARY CLINIC

T: 01625 585500 WWW.THEVETSPLACE.COM
CHESTNUT HOUSE UPCAST LANE WILMSLOW CHESHIRE SK9 6EH

On site parking
Single site practice
Surgical suite and xray facility
Acupuncture



Message Board



**The next Parish Council
Meeting**

Monday 18th March 2019

6:30pm

@ the Village Hall

If you would like to discuss any issues or problems you may have, I am your dedicated **Police Community Support Officer**. You may see me out and about in the village or you can come to the Police Community Base at the Festival Hall in Alderley Edge. You can also contact me on Prestbury & Alderley Edge Facebook page or via the website www.cheshire.police.uk/prestbury-alderley-edge

PCSO 21549 Anna Jenkinson

GREENBANK VACCINATION AND NEUTERING CLINIC

www.greenbankvets.co.uk

We continue to offer discounted vaccinations, neutering and dentistry for dogs, cats and rabbits

We are also a complete first opinion practice offering medical and surgical consultations - please see our website for prices and more information.

Brook House, 2-4 Northenden Rd, Gatley, Cheadle SK8 4DN

APPOINTMENTS
0161 428 5655
0161 428 5200

**OUT OF HOURS
EMERGENCIES
A&E VETS**
0161 486 2355



Brain Training

Puzzles taken from i newspaper

Word Ladder

Convert the word at the top of the ladder into the word at the bottom of it, using only the four rungs in between. On each rung, you must put a valid four-letter word that is identical to the word above it, apart from a one-letter change. There may be more than one way of achieving this.

BUOY	COWS
FEAT	PAIL

CHESHIRE CANINE HYDROTHERAPY CENTRE

Controlled aquatic exercise for dogs recovering from illness or injury

Pre and post-operative rehabilitation

Rehabilitation for dogs with mobility and/or pain restriction as a result of acute or chronic conditions like arthritis

Swimming for weight loss -1 minute in the pool is the equivalent to a 1 mile walk on land!

Building peak cardiovascular fitness for working or competition dogs

Call Sam or Delia

01565 621721

See what we do, log on to

www.cheshirecaninehydrotherapy.co.uk



FRASER WATSON AGRICULTURAL CONTRACTOR

HEDGE CUTTING
FIELD TOPPING
HAY AND SILAGE BAILING
MANY OTHER SERVICES
PROVIDED.
CONTACT 07720706924

MERCURY

Our Editorial Team

Robert Hughes	Parish Council Chairman	01625 827917
Ron Taylor	Parish Council Clerk	01625 585039
Ian Wright	Methodist Chapel	01625 583704
Steve Hatton	Village Hall	01625 590879
Mick Shaw	Social Club	01625 584943
Katy Hatton	Brownies & Guides	01625 590879
Jean Willerton	Primary Academy	01625 383000
Gwynneth Littleton	Women's Institute	01625 528256
Joan Williams	Wednesday Club	01625 590711
Syd Blakeborough	Advertising	01625 532557
Julie Potts	Distribution Coordinator	01625 584615

Our Delivery Team

Wilmslow Road

From Bull's Head to Withenlee Road

Janet Higson

Wilmslow Road

From MSA sign to the Bull's Head incl.
Mottram Old Hall

Shelly Brown

Castle Hill

Shelly Brown

Greendale Lane

Carol Sherin

Wilmslow Old Road

Bill Pilkington

Moss Lane

Bill Pilkington

Rushton Fold

Bill Pilkington

Alderley Road

Ruth Holland

The Crescent

Maureen Steele

Smithy Lane

Val Slater

Oak Road

Mick Shaw/Claire

Hatch/Don & Dyllis Hatch

Priest Lane

Bill Pilkington/Val Slater

Withenlee Road

Claire Hatch

Shaws Lane

Claire Hatch

Hunters Pool Lane

Janet Higson

Wilmslow Road

Phyllis Kennerley

Lees Lane

Michelle Blakeborough

Mill Lane

Michelle Blakeborough

Copy deadline for the next issue is **Fri 22nd March 2019**

Comments, Ideas and Contributions to the Editor:

Mana Shibata

Email - manashibata.ob@gmail.com



Scrap Car Collections

Best Prices Paid for Scrap Cars

Cars collected from your address for no extra charge

Scrap Metal Collections

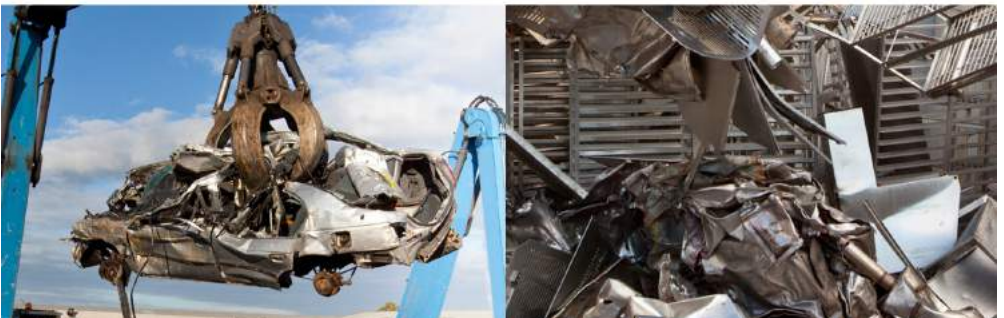
Scrap skips delivered- Free of Charge

Copper, Brass, Lead, S/steel etc all accepted

at our site on Moss Lane, Macclesfield SK11 7XF

01625 425 425

Henshaws Envirocare Ltd



HENSHAWS



Skip Hire



Trade Waste



Scrap Cars



Grab Hire

***Decorative
Gravels***

01625 425425