

*Mottram St. Andrew*  
**MERCURY**

ISSUE 184 APR / MAY 2019

***Sponsored by***

**HENSHAWS**

**01625 425425**



# The Bulls Head

## Mottram St Andrew



The Bull's Head is a classic pub restaurant situated on the Wilmslow Rd in Mottram St Andrew, just a few miles from neighbouring Prestbury, Wilmslow and Alderley Edge.

With open fires, bookcases, good old furniture, prints, rugs and oak floors, with a lighter touch of plenty of plants, flowers and large outdoor sun terrace.

The Bull's Head has returned to its roots as a traditional country pub.

Our menu has a spine of freshly prepared, classic British dishes complimented by more exotic influences from other parts of the world - Modern British Cookery.

Our wine list has about 50 carefully chosen wines from all over the world, with plenty of choice of wines by the glass. You will also find available 5 cask ales and an impressive array of 50 Whiskeys to tempt the tast buds.

### Recommendations

Good Pub Guide2014

Good Pub Guide - New pub of the year2014

### Opening times:

Day	Open	Food served
Monday	10:30am - 11pm	12noon - 10pm
Tuesday	10:30am - 11pm	12noon - 10pm
Wednesday	10:30am - 11pm	12noon - 10pm
Thursday	10:30am - 11pm	12noon - 10pm
Friday	10:30am - 11pm	12noon - 10pm
Saturday	10:30am - 11pm	12noon - 10pm
Sunday	10:30am - 10:30pm	12noon - 9:30pm



The Bulls Head, Wilmslow Road, Mottram St Andrew, SK10 4QH  
Tel: 01625 828 111  
Email: [bulls.head@brunningandprice.co.uk](mailto:bulls.head@brunningandprice.co.uk)  
Web: [www.bullshead-mottram.co.uk](http://www.bullshead-mottram.co.uk)

# The Parish Magazine of Mottram St. Andrew

Produced jointly by the Village Hall Committee and the Parish Council

---

**S**PRING HAS ARRIVED! I am particularly enjoying all the cherry blossoms coming out in people's front gardens all over the country, making me think of home. I have never felt home sick since I moved to this country at the age of 13 but there are a few things that make me feel a little bit proud of my home country. For example did anyone catch Monty Don's documentary about Japanese gardens on BBC Two? Well the attention to detail these gardeners have is quite astounding, not to mention the time and patience it all takes! I sadly do not have a garden of my own but if I did, I am not very confident that I would do a good job of looking after it, despite being Japanese...

As always you will find all the important village reports and articles provided by local people. For the interview feature a former RAF pilot, Tucker Wennell has kindly taken part - I have never known much about planes even though I have been on several long haul flights but since getting in touch with Tucker I have visited the Arvo Heritage Museum website and I must say the Vulcan looks rather impressive in the photos!

We should all plan a visit if you haven't already been.

I have had lots of kind offers from you already with contributions to The Mercury - please please keep them coming! You can reach me by email on [manashibata.ob@gmail.com](mailto:manashibata.ob@gmail.com) or by phone on 07835 665022. Maybe you have some local history you would like to share, or book reviews, recipes, short stories, poetry, blog posts... Remember you can also send me notices and messages for the village to let everyone know about any events coming up or personal news. The deadline for the next issue is **Friday 17th May.**

Now grab some biscuits, pour yourself a cuppa and enjoy this issue of The Mercury!

Mana (and my nephews!) x



Front Cover Photo: The Roaches in February sunshine, taken by the Editor

# **M** **D**AVENPORT BUILDERS LIMITED

---

## **Quality builder with over 30 years experience**

M.Davenport Builders Ltd began as a small joinery firm in 1977, founded by Mark Davenport.

It is now one of the most respected independent building firms in the Stockport and Cheshire areas.

With over 20 full-time experienced employees and a fleet of company owned vehicles, all clients can be assured of quality workmanship and the utmost professionalism throughout the duration of their job. All sites are overseen daily by Mark and his business partner Jon, who are on call whenever a client needs them.

M.Davenport Builders Ltd has been a member of the National House-Building Council (NHBC) for over 20 years. The NHBC is the leading standards setter for UK house-building, which established an approved housebuilder register - of which we are proud to be a member.

For any enquiries, please get in touch with Mark

## **Services**

- House building
- Extensions
- Large-scale alterations
- Conservatories
- Spas and Swimming pools
- Re-roofing
- Driveways
- Outhouses
- Garages
- Porches
- Landscaping



**0161 439 4051**

**mark@mdavenportbuilders.co.uk**

**www.mdavenportbuilders.co.uk**

# Parish Council Chairman's Report

**A**S WE PREPARE to put the clocks forward at 1am on Sunday March 24th we await with eager anticipation some warmer weather. Easter Sunday is quite late this year – April 21st – so let's hope things improve by then.

Those of you who must navigate the crossroads junction at Mill Lane and Lees Lane will have noticed the alterations recently completed by engineers from the Highways Department at Cheshire East Council. The intention is to prevent cars heading to Adlington from 'undertaking' cars turning right into Mill Lane, thereby protecting school children awaiting their morning bus ride on the corner of Woodford Lane and Wilmslow Road. Your Parish Council had to contribute £2,000 from our modest budget to get this work done. I was concerned however that the alterations had not worked and so put payment of the invoice on hold pending interviews with Woodford Lane residents. These, together with video footage provided by one resident, proved our point. Councillors Pilkington and Levis then presented our findings to Cheshire East and I am pleased to report that Cheshire East have released a further £7,000 from their budget to make additional alterations. This is very much a 'win' for your Parish Council and for the residents and children who use that junction.

Planning issues continue to dominate Parish Council meetings and we encourage all residents to come along and share their thoughts with the Council. If you wish to object to any planning application you should do so to Cheshire East directly, and we can advise you on this.

Roughly twenty houses in postcode areas SK10 4QH and SK10 4QJ will be offered fibre broadband before Easter, all being well. Do check availability in your area by visiting the Openreach website and putting your telephone number or post code into their fibre broadband availability checker.

On **Monday April 29th at 7pm** we will be gathering in the Village Hall for the annual Village Meeting. This year I am pleased to announce that there will be a video presentation titled 'Doorstep Crime Awareness' which covers Rogue Traders, Distraction Burglary and Scams. This will be presented by Mr Paul Unwin of Cheshire East Council and we urge all residents to join us for what should be a very interesting and informative talk.

Finally, do contact your councillors on any matter concerning life in the village which may be of concern to you. We are here to help. Have a lovely Spring season.

**Robert Hughes**

*robhughes2011@hotmail.co.uk*

*Clerk - rontaylorllb@gmail.com*

## Mottram St. Andrew Methodists

**I**T'S GOOD TO see our church buildings continuing to be used by other groups and organisations from our community and particularly pleasing to see our home-grown Crafty Club thriving too. At our recent March church council meeting we heard a full report on the way the craft club members are using their skills to benefit people way beyond our own village boundaries; from knitting hats, gloves and scarves for the Christmas shoebox appeal, hats for 'Hats for the Homeless', to wash-bags full of toiletries for emergency visitors to Alder Hey Hospital in Liverpool. So many people being helped in perhaps a small but nevertheless, significant way, and a big thank you to all concerned especially from those of us not gifted with craft skills but appreciative of all they do. The 'Crafty Club' meets on the second and fourth Tuesday of the month at 10am in the church and can always accommodate more visitors or members who can be sure of a warm welcome.

We are pleased too, to say that all the positions of our church office holders have been filled during the last twelve months and we continue on with an enthusiastic congregation whose numbers are holding steady and perhaps growing slightly. One or

two people added to the mix can make a considerable difference, especially to the morale of the long standing members who, over the years, have witnessed the rise and fall of numbers attending on a Sunday and prefer to see numbers rise! We remain encouraged by our present minister Rev Sue Swires and also her husband Will Swires. When they first arrived they said they came as a team and this is very evident in all the interactions we have with them. In a recent development Will and a couple of our members have led an assembly in the Primary Academy which seemed to go well for all concerned and is a very welcome development too.

Music is an important part of our Sunday Services but at present we don't have an organist available every week (volunteers to join the existing pool would always be welcome!). We also have a piano and if Will is available to play this for us; this instrument too, is put through its paces. If these two options fail we still have the digital hymnal to provide accompaniment to our hymns so music is always part of our Sunday Services one way or another. To have another organist however, would be a great bonus. Any offers?!

In this edition we are coming up to Easter, the date governed by the phases of the moon which means Easter is later this year with Easter Sunday falling on 21st April. As our contribution to the Holy Week we are hosting a **'Tenebrae Service' on Thursday 18th April** in the chapel at 6.30pm. Other services we are invited to share are the **Good Friday 'Walk of Witness'**, taking place on **19th April, starting at Alderley Edge Methodist Church at 10.30am**. For those who like to be up early (As well as those who don't!), we are also invited to share in the **Easter Sunday Ecumenical Service held on Castle Rock at 6am**, always a special occasion whatever the weather! **Our own Easter Service follows at 9.30am.**

Before the Easter Eggs make an appearance in our diet however, we have our **'Pudding Tasting Evening'** to look forward to, this taking place on **Saturday 6th April from 7pm in the Village Hall**, and keeping to a culinary theme we also can look ahead to a **'Strawberry Tea' planned for Saturday 8th June from 2pm to 4pm** again in the Village Hall. Both occasions are in aid of church funds which are always in need of topping up if we are to maintain the building and support the funding of our Minister's stipend etc. so we are looking forward to these events and hope they are as successful as those we've held before.

**Ian Wright (Secretary) 01625 583704**

## PARROTT'S OF CHESHIRE LTD

Accounts prepared and self-assessment tax returns submitted for sole traders, partnerships and limited companies.

**HAROLD PARROTT B.Com ACIS**  
**Contact on**

**T: 01625 618920 M: 07946 514911**

**E: [parrottsofcheshire@tiscali.co.uk](mailto:parrottsofcheshire@tiscali.co.uk)**

**[www.parrottsofcheshire.com](http://www.parrottsofcheshire.com)**



# Village Hall

The Village Hall continues to be busy with existing groups doing well, and new enquiries coming in from potential hirers.

This does mean that the Hall gets a fair amount of wear and tear, and so we are having to invest in new equipment and plan for some cleaning and decorating.

A new fridge and freezer were installed in March and we are

planning to repeat the call for a working party in August to help us tidy up the Hall and to do some essential maintenance. At the moment we are looking at a 3 day closure of the Hall from the 19th to the 31st August. If you are able to spare a couple of hours on any of those days we would be happy to find you a job! More information on this to come in the next edition.

**Steve Hatton (Chairman)**

## ANNUAL GENERAL MEETING

### MOTTRAM ST ANDREW VILLAGE HALL MANAGEMENT COMMITTEE

**8th April 2019 commencing 7.00pm**

#### **AGENDA**

- 1.** Apologies for Absence
- 2.** Minutes of Meeting 16th April 2018
- 3.** Chairman's Report for 2018/19
- 4.** Treasurer's Report: Year Ending 31st December 2018
- 5.** Confirmation of Trustee Members  
Steve Hatton - Chairman  
Peter Ellis - Treasurer  
Don Parkinson - Secretary (subject to resignation)  
Sheila Cavanagh  
Eric Garner  
Malcolm Eley  
Mick Shaw

Pauline Glancy  
Louise Brown  
Jan Fogg

- 6.** Trust Deed Organisational Members  
Councillor - To be appointed  
The Rev Sue Swires - Methodist Church  
Marion Oates - W.I.

- 7.** Other Organisational Members  
Phyllis Kennerley - Bowling Club  
Mana Shibata - Mercury  
Primary Academy representative - To be appointed

- 8.** Next Management Committee Meeting & A.o.B.



# Mottram St. Andrew Primary Academy

## Head Teacher's Report

**W**E ARE HAVING a very busy term, with lots of exciting events and impressive work by our children. A highlight of our school year is our annual Arts Week, which is organised in conjunction with all of the Fallibroome Learning Community schools. The theme this year was 'Global Warriors', and our children explored a range of environmental issues. A key message was the need to increase our re-cycling, and therefore all of the art work produced used re-cycled materials. During the week, our Year 4 and Year 5 children performed in the celebration concert, in the theatre at Fallibroome Academy. Staff were impressed with their powerful performance, and received many compliments on the very high standard of their singing.

All classes include regular visits out of school to stimulate the children's learning. Year 4 have just had a great day experimenting and discovering more about electricity, at the Museum of Science and Industry. Year 3 visited the Blue Planet Aquarium, as part of their Under the Sea topic. They had an informative day, and even performed their Save

Our Seas poems amongst the sea life. Year 1 had a day with a historical focus at Quarry Bank Mill, experiencing life in the past, including the apprentice house and school room.

Our school choir had a memorable experience at the Young Voices concert at the Manchester Arena. These concerts are known as the largest children's choir in the world, and bring together children from across the region. This year, two of our children even appeared on television, as they were chosen to be interviewed for BBC North West Tonight.

Our Nursery class, which is now in its second year, provides a stimulating and nurturing experience for our youngest children. Feedback from parents is very positive about the care and support given by our Nursery staff. We take children from the September after they are three and offer flexible hours. The core sessions are 8.45-11.45am and 12.15-3.15pm and free childcare hours can be used for these. We also offer wrap around care from 7.45am-6pm. If you know anyone who might be interested in a Nursery place then please ask them to email [office@mottramacademy.org.uk](mailto:office@mottramacademy.org.uk)

We are the lead school for the Silk Alliance School Direct Primary Programme. This PGCE course is offered in conjunction with Manchester University, who are rated as Outstanding by Ofsted. This is a one year postgraduate course and

we still have places available for next September. If you know anyone who might be interested in applying then please ask them to contact Mrs Mary Flynn.

[mflynn@motttramacademy.org.uk](mailto:mflynn@motttramacademy.org.uk)

**Jean Willerton (Head Teacher)**



*Clockwise from top left: Young Voices at Manchester Arena; Science and Industry Museum; Blue Planet; Styal Mill; Dressing up at Styal Mill*



# Join in!

Information on clubs and groups in the village.

## Young People & Parents

**Toddler Group** Mondays 10:00-11:30 (Contact Katy Hatton 01625 590879)

**Brownies** Contact Katy Hatton 01625 590879

**Guides** Fridays 6-7:30 Contact Katy Hatton 01625 590879

## Get Active

**MSA Walkers** Relaxed walks in the surrounding area with a friendly group. (Contact Katy Hatton 01625 590879)

**Pilates** with Heidi Cowan. Heidi leads a fun and friendly class, adapting each exercise to everyone's abilities. Come and have a free trial session! Mondays 12:0-13:00 (Contact Katy Hatton 01625 590879)

**Bowling Club** We continue playing indoor bowling over winter. Beginners welcome. (Contact Brian Slater 01625 828077)

**Jive** Thursdays 19:30 Beginners welcome. Visit the website for details - [www.mottramjiveclub.org.uk](http://www.mottramjiveclub.org.uk).

## More the Merrier!

**Wednesday Club** Every other Wednesday 14:00-16:00 (Contact Pauline Glancy 01625 262940 / 07731 483022 or Margaret Potts 01625 582154)

**Social Club** Tuesday, Thursday and Friday evenings from 20:00 with plenty of fun events, offering something for everyone. (Contact Mick Shaw 01625 584943)

**The Women's Institute** Inspiring women of MSA since 1948. First Monday of every month 19:30 (Contact Margaret Graham 01625 617054 or Anne Wilson 01625 250473)

**Crafty Club** Second Tuesday of every month 10:00-12:00 (Contact Margaret Graham 01625 617054)



## BARRY A. WICKS

### Interior and Exterior Painter and Decorator

Contract work undertaken  
Free Estimates

**01260 270714 / 07769 681252**

12 Swaledale Avenue, Congleton, Cheshire, CW12 2BY

# The Women's Institute

**O**UR MARCH MEETING is "Members Night" when the committee enjoy a night off and other members step in to run the evening. Our speaker was Sophie Cavanagh (Sheila's granddaughter) with her talk "Trekking in the Grand Canyon in aid of the East Cheshire Hospice 30th Anniversary". The group had to survive in the wild, they got the chance to jump into the Havasu Falls, one of several majestic waterfalls over 200ft high. An unforgettable hike through one of the Grand Canyon's most breathtaking destinations ending with an overnight stop in iconic Las Vegas, a perfect way to end the challenge. The whole group raised £50K and Sophie & her partner Danny raised £6,400 – an amazing achievement. Well done everybody!

The following day eighteen of our members went to see the production from the award-winning TEMPO of 42nd Street at Wilmslow Leisure Centre. The all-singing, tap dancing, glitzy spectacular which tells the story of Peggy Sawyer and her rise in a 1930's Broadway show from the chorus line to leading lady.

We have been involved with "Show the Love" - Green Heart campaign to protect against climate change and

take a personal challenge to reduce our carbon footprint and by wearing a green heart to show your support and make other people aware of our challenge. Donations received for this cause were put to good use to provide emergency toiletry bags filled with everyday essentials for Ronald McDonald House at Alder Hey hospital. Each day a child is admitted with a parent and they end up staying in overnight or for days, or weeks. They arrive with nothing and these bags provide a little comfort for families at such a difficult time. Big thanks to Pat Smith and daughter Rebecca for delivering 30 beautiful bags which have been gratefully received.

A County walk has been organised by Over Alderley & Birtles WI and this will take place on Wednesday 10th April in the Alderley Edge area. Let's hope it's a nice sunny day!

I have included a copy of our upcoming programme (see right), if anything appeals to you then please come and enjoy an evening taster session, you will be most welcome.

I have again some sad news to announce – a past member Eva Hancock has sadly passed away. Eva transferred to our WI when Alderley Edge closed. She was an absolutely

# We insure it. You enjoy it.

**BESPOKE**  
THE NFU MUTUAL  
INSURANCE COLLECTION

It's no surprise that over 95% of our NFU Mutual Bespoke Home Insurance customers choose to stay with us.

NFU Mutual Bespoke Home Insurance is specially designed to cover larger properties and more complex insurance needs with contents valued from £100,000.

For more details, speak to India Lawrenson on 01625 422 276,  
email [macclesfield@nfumutual.co.uk](mailto:macclesfield@nfumutual.co.uk) or visit us at  
1 Maple Court, Davenport Street, Macclesfield,  
Cheshire, SK10 1JE



[nfum\\_Macclesfield](https://twitter.com/nfum_Macclesfield)



**NFU Mutual**  
INSURANCE | PENSIONS | INVESTMENTS

Our Agents are appointed representatives of The National Farmers Union Mutual Insurance Society Limited (No. 149823), Registered in England. Registered Office: Tiddington Road, Stratford upon Avon, Warwickshire, CV37 7BJ. Authorised by the Prudential Regulation Authority and regulated by the Financial Conduct Authority and the Prudential Regulation Authority. A member of the Association of British Insurers.

For security and training purposes, telephone calls may be recorded and monitored.

© 2017 NFU

An independent travel agent with 30 years' experience based locally in Mottram St Andrew. Whether it is a beach holiday in Mauritius, a cruise around the Caribbean or a multi-centre adventure in the Far East, I would be delighted to share my knowledge and help you plan your truly Bespoke Holiday. I can meet you for a coffee, chat on the phone or, if you lead a busy life, we can just correspond by email.

### Recent Customer Experiences on Feefo

"Bespoke Holidays always deliver 5 star dream holidays." - W Hanley



# BESPOKE HOLIDAYS

Tailor-Made | Bespoke | Luxury | Affordable



Helen Powell



[sales@bespokeholidays.com](mailto:sales@bespokeholidays.com)



[www.bespokeholidays.com](http://www.bespokeholidays.com)



[/bespokeholidayshelenpowell](https://www.facebook.com/bespokeholidayshelenpowell)



01625 568800



fantastic knitter and a great crafter, entering many times into the village show. Even this last Christmas she sent handmade cards out to her friends & family, so it is with great sadness that I am sharing this news. A minute's silence was held in her memory.

Our Film Group meet monthly at MSA Methodist Church – please see the village notice board for

### **The Upcoming WI Programme**

May 13<sup>th</sup>

Resolutions Night - Beetle Drive  
Competition - Teapot

June 3<sup>rd</sup>

Summer Birds on Farm at Marton  
*David Taylor*  
Competition - Bird Ornament



upcoming dates and times. "The Greatest Showman" in February was very popular and we had visitors from Dean Row WI which bumped the numbers! Everyone is welcome and we serve tea & cakes – Entrance £3

For more information about your local WI contact Margaret Graham 01625 617054 or Anne Wilson 01625 250473

**Anne Wilson (Secretary)**

July 1<sup>st</sup>

The Topic of Wills  
*Tessa Wiskard*  
Competition - Fountain Pen

August 5<sup>th</sup>

**Summer Surprise**



# Bowling Club

## FANCY TRYING A NEW HOBBY?

Ever thought about giving Crown Green Bowling a go?

It is strongly recommended as an enjoyable pastime and whether you just want a friendly sociable game of bowls, or something a little more competitive, there is something for everybody at Mottram St Andrew Bowling Club.

Mottram's bowling club is situated adjacent to the Village Hall, Wilmslow Old Road, Mottram St Andrew, SK10 4PQ.

The club has a magnificent setting being situated in the lea of The Edge at Alderley, in the midst of the beautiful Cheshire countryside. There are tidy borders with flower pots dotted around and seating, all of which frame the well maintained floodlit bowling green. There is cover from the elements and a pavilion which houses a functional kitchen used most days for the essential brewing up ceremony! In the pavilion there is also a TV, a fridge and a charity bookshop. There are plentiful car parking facilities.

Mottram St Andrew is a long established club with records going back over forty years. It is a great credit to club members that they manage and organise the club and

maintain the green on a voluntary basis. Indeed, the green, the clubhouse and all areas were created and built by members. This ethos has always been a hallmark of the Mottram Club and has done much to engender the "family feel".

New members are always welcome. Whether you are a complete novice or have tried bowling before you are welcome. Please contact **Jill Hillary, Membership Secretary on 01625 820244** for further details.

## Quotes from Mottram St Andrew Bowling Members

*"New members amazed at the club's convivial atmosphere and the wonderful spread of refreshments at our internal competitions"*

*"When I joined Mottram the welcome was wonderful and everybody was so friendly"*

*"I have made many lasting friendships among the members"*

*"Thank you everybody at Mottram. Since joining two years ago I have been made most welcome and have found fun, humour and friendship prevalent throughout the club. I love the Mottram Club and all it stands for."*

*"The Sunday afternoon tournaments are always relaxing and enjoyable with lots of friendliness and fun followed by the very welcome spreads."*



## **What Does Crown Green Bowling Involve?**

Crown Green Bowling is a game of concentration, precision and accuracy and involves rolling biased balls (woods) as close as possible to a smaller ball (the jack). It has been a popular game in the UK for centuries, being introduced by the Normans in the twelfth century. There are thousands of bowling clubs throughout the country. As the sport does not involve prolonged periods of intense activity, it can be played and enjoyed by most people regardless of age or gender. It is essentially a relaxing summertime activity. It is either taken up as a social activity - strictly for leisure - or it can be played at competition level, for those who want to challenge themselves more. The Mottram Club caters for either or both of these choices.

The Mottram Green is available for members for social bowling during the season, when not in use for regular scheduled events.

For those who enjoy playing against other teams in the area, there are plenty of opportunities to join one of the club's teams for either afternoon or evening matches in the various local bowling leagues. Each of the Mottram Club's teams are mixed, comprising of ladies and gentlemen.

As well as the league fixtures there are a number of internal competitions for club members played on Sunday afternoons throughout the summer. These are always enjoyable and sociable occasions and made even more so by the wonderful buffets provided by members and enjoyed after the bowling.

Bowling is not just a summer sport and at Mottram St. Andrew indoor bowling is enjoyed in the Village Hall during the winter months.

All outdoor bowling is played in accordance with the current laws of the British Crown Green Bowling Association.

**Jill Hillary (Membership Secretary)**

## **Regular Events at Mottram Bowling Club From April to October**

Monday mornings - Social Bowling

Tuesday afternoons - Veterans Mixed Macclesfield League

Tuesday evenings - Mixed Macclesfield League (Divisions 3 and 4)

Thursday afternoons - Mixed Alderley Edge League

Thursday evenings - Mixed Macclesfield League (Divisions 1 and 2)

Sunday afternoons - Friendly competitions or Social Bowling

## Music at Mottram

Our March concert was a bit of a milestone as we celebrated our third Music at Mottram anniversary. Chris and I are both surprised and delighted that we have managed to put in 15 different live music concerts over the course of the last three years. We have delivered on our promise of presenting "The Cream of British Folk Music" and have built up a following of regulars who come along each time to support us.

It has been our privilege to get to meet many of our Folk music heroes along the way and at the same time to generate some income for the Hall, the local pub and the B&B...

Looking forward, we have bookings in the Autumn starting in September with the mighty **Holy Moly and the Crackers**. We had so many requests to bring them back and are delighted that this has proved possible.

We follow that with something different with more of a Blues / Rock

band in response to requests for something other than Folk music. **The Hiding Magpies** are a fabulous blend of Tom Petty and Free. Let's see what response we get from the non Folkies. Greg Russell and Ciaran Algar take us back to a more traditional Folk genre in November but with an energy that comes from the recently crowned BBC Young Folk Musicians of the Year. We have added an extra concert in early December because we had the rare opportunity to secure a date with our favourite singer / songwriter. We can't announce his name yet but we are thrilled.

Thanks to all of you who have come along to our concerts. Many are not Folk music fans but have simply enjoyed watching live music in our Hall, and made a few musical discoveries along the way. For those if you who haven't made it yet, the Holy Moly concert in September is a good place to start!

**Steve Hatton**

## MSA Brownies

### 1st Mottram St Andrew guides

This term we have begun our new guide association programme.

Guides are choosing new interest badges to do such as Vlogging, mixology and whittling - Paige planned a delightful evening designing a smoothie bar that had a wide selection of smoothies which the guides could

choose for her mixology badge. Eleanor made a carrot flute, pencil box and a sign for her whittling badge.

We have begun planning a visit to Disneyland Paris next Easter.

Guides meet in the village hall on **Fridays 6-7.30pm**.

**Katy Hatton (Owl)** 01625590879

# M<sup>music</sup> at ottram

The Cream of British Folk Music  
in the Heart of Rural Cheshire



**Saturday 28<sup>th</sup> September**

**HOLY MOLY** and the **CRACKERS** Tickets **£16**

*"Much requested return of one of the best live acts around"*

**Saturday 19<sup>th</sup> October**

**JAKE DIXON** and the **HIDING MAGPIES** Tickets **£12**

*"Fantastic innovative Americana, Rock n Roll, Country band"*

**Saturday 16<sup>th</sup> November**

Greg Ciaran  
**RUSSELL & ALGAR** Tickets **£14**

*Driving guitar & powerful vocals from BBC Young Folk Award winners*

**Mottram St Andrew Village Hall**  
Between Wilmslow and Macclesfield, SK10 4QP

**Doors open at 7.15pm for 8 o'clock start**  
For Tickets see our website [www.musicatmottram.com](http://www.musicatmottram.com)  
Email – [musicatmottram@gmail.com](mailto:musicatmottram@gmail.com) or Telephone – 07904 072190

# Social Club

**S**PRING ALREADY, THE year is flying by. The sun is beginning to throw out some heat at last, so much so that the frogs have spawned in our pond and they're never wrong about Spring arriving.

We will be holding this year's **Social Club AGM on TUESDAY 9th APRIL at 8pm in The Clubroom** at Mottram St Andrew Village Hall. Any nominations for new committee members should be sent to our secretary (full details in the letters you will now have received).

The AGM for the Village Hall will be held on Monday 8th April at 7pm.

## Forthcoming Events

Next **Curry Nights** will be Tuesday 30th April and Tuesday 28th May from 7.30pm. Ensure your name is on the list by the Tuesday before to avoid disappointment.

Friday 12th April we are holding a **Fish and Chip night** along a similar theme to the popular curry nights. Names on the list by Friday 5th April, price £8 per person including your first drink at the bar.

**Chester Races** Thursday 9th May. This trip to the races starts at the Village Hall with an oatcake and Bucks Fizz breakfast. Transport to Chester Races, entry to the

racecourse, return transport and nibbles on return to the Village Hall. This is always a fantastic day out so get your names down early if you are interested. There will be a sheet up in the Clubroom or you can email me (msavillagehall@outlook.com) by Friday 12th April. Price will be dependent on package selected, members receive a £10 discount.

The Club is open Tuesday, Thursday and Friday evenings from 8pm and you would be most welcome to join us.

Don't forget it is now time to pay your membership subs of £10 to Sheila Cavanagh or you can pay over the Social Club bar.

Cheers,

**Mick Shaw**

Keep up to date on the website:  
[www.mottramstandrew.com](http://www.mottramstandrew.com)

**WINDOW CLEANER**

**J. Fowler & Sons**

**Tel 01625 617903**

**Mob: 07803 612316**

**A local family business for over 100 years**

**FULLY INSURED**

**Window cleaning and Gutters cleaning**

**2019**  
DATE

A CELEBRATION OF

AS HEARD ON  
**BBC RADIO**

# **SIMON & GARFUNKEL**



"What a fantastic show with two great guys,  
two voices and two guitars delivering the  
best acoustic interpretations of  
Simon's classic songs"  
Sally Naden, BBC Radio.

**£12**  
IN ADVANCE

**PERFORMED LIVE BY TIM CHU & IAN BAILEY**

**Saturday 27<sup>th</sup> April 8pm**

Mottram St Andrew  
Village Hall SK10 4QP

**Tickets on sale now**

Doors open 7pm

Licensed Bar

Tickets: Tel: 01625 584943 Email: [msavillagehall@outlook.com](mailto:msavillagehall@outlook.com)

[www.classicsingersongwriters.co.uk/sandg](http://www.classicsingersongwriters.co.uk/sandg)

# The Untidy Gardener

Notes from an untidy garden by **Ian Wright**

**I**VY, IVY, EVERYWHERE, so what was I to think?! What was I to do about the ivy? As regular readers will know, I'm easy going and keen to encourage anything that will grow in the garden without my intervention, but when one species makes a bid for garden domination its time to get tough and bring in the Adjustment Bureau. And believe me dear readers; the ivy was getting the upper hand.

Don't get me wrong, I'm very fond of ivy. It grows in the shade. It covers the ground (and everything else), where nothing else will. There are umpteen species and even more varieties of the most wonderful colours and uses. It's brilliant for the wildlife; giving shelter in plenty and generous pollen for insects in the autumn with winter berries when there is little else for the birds to eat. So what is there not to like? Well.....! For one thing it's sneaky and will seemingly hang about looking pretty for years and then suddenly it seems it becomes a rampant monster. So what is the solution to bring it back where it belongs and put it in its Place?

My personal preference is a biological approach; the biological agent in this case being –'THE GARDENER'! 'THE GARDENER', simply powered on a bowl of cereal and a generous ham sandwich and lubricated with tea will, once set to work, work tirelessly for – for – well for a while anyway - but he is persistent! Armed with a pair of guillotines, a short pruning saw and a fearless expression of determination he is set to work on what he imagines will be a short job. The morning passes, then the afternoon, then it's the next day and still he struggles to control the tendrils of rampant growth that are holding the hedge (as it is laughingly called), in a terminal grip; tendrils so thick and long that Tarzan himself could have trusted his life to swing on them!

At great risk to his reputation he tidies up as he goes, revealing the skeletal remains of 'the hedge proper' which looks like it has been partially digested with only the bones of its previous occupants left to witness. In fact, so alarmed at the carnage he has achieved, 'THE GARDENER' is forced into a defensive mode and reluctantly calls it a day; a point made, a minor victory won and with a quite sizeable

bonfire to oversee retirees from the battle to regain his strength.

As though staking a claim to this territory now won back from the clutches of the foe he, some time later, optimistically returns to the scene, bringing in fresh blood and plants a veritable thicket of young plants amongst the old as if to

mitigate his previous violent actions. Yet even as he pulls out the last vestiges of green shoots and ivy roots, stragglers from the earlier battle, there seems to filter through the ether those three words favoured by a certain hero (as well it seems by the Ivy), with both their threat and their promise - 'I'LL BE BACK'! - But then so too will - 'THE GARDENER'!! ♦



Hedge before treatment



Hedge after treatment

## *Albert R Slack Ltd & JW Brocklehurst Ltd*

**Funeral Directors & Monumental Masons**

**Independent Family Businesses Since 1853**

*Working together to serve the communities of  
Wilmslow, Alderley Edge, Prestbury, Bollington & Macclesfield.*



*Albert R Slack Ltd* 84 South Oak Lane, Wilmslow, SK9 6AT. **01625 525063**  
*JW Brocklehurst Ltd* 17 Macclesfield Road, Prestbury, SK10 4BW. **01625 829232**

**[www.cheshirefunerals.co.uk](http://www.cheshirefunerals.co.uk)**



Golden Charter  
Funeral Plans





🐾 Potty Paw's Animal care 🐾

home from home pet care  
Motttram St Andrew  
Tel: 07920 118599

## Computer problems? Here's the solution:

Call the friendly service dedicated  
to home & small business users!



Paul and Jan  
Truswell



A PROFESSIONAL PARTNERSHIP WITH OVER  
40 YEARS JOINT EXPERIENCE SUPPORTING I.T.

Real people offering real help.

**freedom**  
computer services

01625 26 25 26 [fcits.co.uk](http://fcits.co.uk)

We are a Wilmslow based, family owned  
veterinary practice specialising in domestic pets.

**BIG OR SMALL  
WE CARE FOR  
THEM ALL.**



THE VETS' PLACE  
VETERINARY CLINIC

On site parking  
Single site practice  
Surgical suite and xray facility  
Acupuncture



T: 01625 585500 [WWW.THEVETSPLACE.COM](http://WWW.THEVETSPLACE.COM)  
CHESTNUT HOUSE UPCAST LANE WILMSLOW CHESHIRE SK9 6EH



# *Way Back When... Kirkleyditch*

**Barbara Newton** has kindly shared an article from the Cheshire Life Magazine in 1981 (by Susan Stafford), telling the fascinating story of Kirkleyditch Common. Here is the article continued from last issue.



Once you are in the know, the Gardens of Kirkley mount and copperfields reveal traces of the old workings, for they have deep depressions and hillocks, which represent spoil heaps and the old entrance to the mine. These have been skillfully exploited to form two Japanese landscape gardens with pools spanned by hump-backed Bridges and symbolic features carried out with stones and trees. Water, trees and stones are the three essential constituents of a Japanese garden, flowers being for the most part irrelevant and relegated to a separate flower nursery. Subsidence from the workings has occasionally posed a few problems, as for the farmer who returned to his ploughing one morning to find an enormous crater where he had been operating the previous day. But most of the houses of the district are built on the solid rock which in many places underlies the surface soil.

The wheelwright's shop was in the hands of John Henry Jennings for a few years in the 1890s; subsequently he went to Sandbach and founded Jennings Coachwork Ltd., a family firm which is still going strong, though now it has removed to Crewe. When Jennings left in 1899 the shop was taken over by Mrs Cliffe's father Joseph Ford, who had lived in with the Jennings for two years as an apprentice. Although he was only sixteen he had a flair for his craft and it was at Jennings' suggestion that he set up on his own account. Mrs Cliffe's uncle and brother have also carried the shop on until her brother's death in 1963.

The premises are still in existence and she has many stories to tell of the cart, especially milk floats, which were made there for the farmers in the neighbourhood. The curving shafts were steamed into shape at their wash boiler after the lancewood to make them had been collected off the train at Alderley Edge and wheeled home by bicycle. Next to the shop is the smithy, left exactly as it was when it was used to forge the iron fittings for their carts. Mr Cliffe still makes use of it from time to time, employing the same tools that Jennings used. ♦



**kimble rodén**  
ARCHITECTS

*Residential Design Experts*

## *Creating Space for you to Enjoy...*

*Kimble Roden are a design focussed architects' practice passionate about bringing the highest levels of design to residential projects.*

*We will:-*

- Obtain **planning permission** and building regulation approval using our wealth of experience
- Explore all your design options **before** work starts on site.
- Design **every** element of the work internally and externally to ensure you achieve the quality finished home you dream of.
- Use our expertise to obtain **fixed quotes** from recommended builders and then let us oversee their appointment.
- Oversee your builders work and progress to ensure you **stay in control** of costs and time.



*Contact Emma or Edwina Tel: 01625 402442/ Mob: 07762 363952  
Or visit our website: [www.kimbleroden.co.uk](http://www.kimbleroden.co.uk)*

# LAND WANTED

**Henshaws are currently looking for land for  
a new Recycling Centre**

**Ideally around 2 - 6 acres,  
but open to other suggestions**



**Please Call 07810 75 00 00**



MOTTRAM HALL  
*Cheshire*

## Cheshire's finest Afternoon Tea

Indisputably one of the finest hotels in Cheshire, Motttram Hall is exclusively nestled in 270 acres of rolling countryside. Standing proud in Cheshire's golden triangle, sumptuous and tastefully traditional, it's a picture of elegance.

Afternoon Tea at Motttram Hall is a beautiful ritual; a celebration of tea and its theatre. It's the perfect way to spend an afternoon with a loved one or celebrate a special occasion with a group of friends.

Why not make your experience even more memorable by enjoying Champagne Afternoon Tea for just £30.00pp or Veuve Clicquot Afternoon Tea for only £35.00pp.

Available all week from  
12pm – 4pm

CHESHIRE'S FINEST

*Afternoon tea*

A reservation is required, to book  
Call 01625 828 135 | [www.motttramhall.com](http://www.motttramhall.com)  
Wilmslow Road, Motttram St Andrew, Cheshire, SK10 4QT

# Cage Collection Service

Our prompt and professional cage collection service is an ideal and cost-effective alternative to hiring a skip.



It is ideal for the removal of large bulky unwanted furniture, such as beds, suites, wardrobes etc.

We'll arrive within an agreed time slot and take your rubbish away.

## Furniture Removal Carboard Collection

**Henshaws Envirocare**



**01625 425 425**

Peter  Pownall

*Of  
Mottram St. Andrew*



*Making Fine Furniture for 40 years*



Peter Pownall Wood Design  
Oak Road, Mottram St. Andrew, Macclesfield, SK10 4RA

**Telephone 01625 829450**

[www.peterpownall.co.uk](http://www.peterpownall.co.uk)

# Mercury Meets...

Tucker Wennell

**Tucker lives in Newton and he spent nearly 40 years flying military and civil aircrafts. He has kindly agreed to answer some questions about his career as a pilot for the Mercury.**

**What inspired you to fly and how did you become a pilot?**

After spending early teenage years in the Army Training Centre and cleaning flight aircrafts at Liverpool Flying Club in return for the odd flights, I chose flying when the invitation from the government to complete national service came. I was amongst the last to be called up.

**What was the best thing about what you did?**

Managing to avoid a 9 to 5 existence. Flying is basically shift work so no two days are the same.

**What was the biggest challenge?**

Completing the two years' flying training to gain my wings in the RAF.

**You must have been involved in some of the big events in history?**

Not hugely but in the early sixties I contributed to the UK Defence in the Cold War.

**What was the most memorable moment in your life?**

Gaining my captaincy on Vulcan aircraft when I was 23, in 617 Squadron.

**What would be your dream come true?**

Go back to being 20 years old and to start flying all over again.

**If you could meet anyone real or fictional, who would you like to meet?**

I have already met him! Johnny Johnson who flew in the Dams Raid for 617 Squadron.

**What were you like at school?**

Only interested in cricket or football. "Could do better" was a recurring phrase on my school reports.

**What would be your advice to young people today?**

Do not waste your school years.

**How would you describe your perfect day off?**

No sign of the lawn mower!

**Which is your favourite season and why?**

Spring - we are lucky enough to live in Newton surrounded by nature and lambing at this time of the year.

**What do you do to keep busy in your retirement?**

I am involved with the Avro Heritage Museum at Woodford. It

represents the History of Aviation in the Northwest. Well worth a visit with plenty of interest for children. The museum is open Fridays, Saturdays and Sundays, and if you are visiting from Mottram St. Andrew, please ask for me. Always happy to show anyone from the village around.

*Thank you Tucker!*

*Avro Heritage Museum -  
[www.avroheritagemuseum.co.uk](http://www.avroheritagemuseum.co.uk)  
Chester Road, Woodford, SK7 1QS*



**ELECTRICIAN**

**Peter R Preston**

Electrical Contractors

**Tel 01625 421763**

Mob: 07836 528468

Local, trustworthy and reliable

With over 36 years experience

**FULLY INSURED**

[www.peterrprestonelectrical.co.uk](http://www.peterrprestonelectrical.co.uk)



**Need a  
Local Electrician?**

**Call Keith Holland**

**01625 584615**

**07880 508916**

**Est. for 30 years**

## **CHIROPODIST**

**Christine Lambert**

State registered M.Ch.S, S.R.Ch

**Tel 07967 633371**

**No Extra Charge for home visits**

Friendly and professional advice and treatment on a wide variety of foot problems including corn and callus removal, Nail cutting,

Verrucae, Warts & In-grown toenails.

Nursing Home visits available

Day, Evening or Weekend Appointments



## **HATCH TREE SURGEONS**



- All aspects of tree work
- Fully insured
- Free quotations
- Emergency call out
- Free advice
- All work to BS3998

- Tree felling
- Crown reduction
- Section felling
- Crown thinning

- Stump removal
- Wood chipping
- Split logs
- No job too big



**Tel/Fax: 01625 828814**

Goose Green Farm  
Oak Road  
Mottram St. Andrew  
Macclesfield, Cheshire  
SK10 4RA  
[www.goosegreenfarm.com](http://www.goosegreenfarm.com)  
[Info@goosegreenfarm.com](mailto:Info@goosegreenfarm.com)

**Mobile: 07715210184**



*A poem for Spring*

## **Today**

By Billy Collins



If ever there were a spring day so perfect,  
so uplifted by a warm intermittent breeze

that it made you want to throw  
open all the windows in the house

and unlatch the door to the canary's cage,  
indeed, rip the little door from its jamb,

a day when the cool brick paths  
and the garden bursting with peonies

seemed so etched in sunlight  
that you felt like taking

a hammer to the glass paperweight  
on the living room end table,

releasing the inhabitants  
from their snow-covered cottage

so they could walk out,  
holding hands and squinting

into this larger dome of blue and white,  
well, today is just that kind of day.

*Source: PoetryFoundation.org*

# ARTHUR BURNS & SON (CONTRACTORS)

*A Family business in the Alderley Area for over 100 years*

**Suppliers of Newly Quarried Imported and Reclaimed Natural Stone Paving  
Crazy Paving - Walling & Coping Stone - Granite Setts and Railway Sleepers**

## **SELF-DRIVE MINI EXCAVATORS FOR HIRE**

Also: Reclaimed Cheshire Bricks • Road Cobbles • Stone Troughs and Sinks  
Chimney Pots • Top Quality Topsoil • Sands • Gravel & Aggregates

Natural stone flags supplied to Borough of Macclesfield, can be viewed locally at the Christchurch development and Town Hall, Macclesfield and more recently, Henshall Road and Palmerston Street, Bollington.

**Tel: 01625 582338**

[www.arthurburns.com](http://www.arthurburns.com) [www.arthurburns.co.uk](http://www.arthurburns.co.uk)

**Deliveries to local & Cheshire area - yard sale welcome**

**"Woodend", Prestbury Road, Over Alderley, Nr Macclesfield, Cheshire, SK10 4SJ**

# WIZARD GARDEN SERVICES

**Established 1984**

## **Maintenance & landscape contractors**

- Garden Maintenance
- Garden Tidy Ups
- Hedge Cutting
- Design Service

**Ponds, Waterfalls, Trees,  
Shrubs and Hedging at  
Trade Prices**

- Turfing
- Seeding
- Paving
- Fencing
- Planting

**SPECIALISTS in water features and extensive lawncare programmes**

**FREE ADVICE AND WRITTEN QUOTATIONS**

**Gary Fletcher NCG** (Horticulture & Turf Culture)

**Tel No: 01625 501264 / 828718**

**Mobile No: 07798 901730**

# Goose Green Farm

## Bed & Breakfast



Welcome to our Prize winning Pedigree Beef farm.  
Set in beautiful countryside with panoramic views.  
Just off the A538 between Wilmslow & Prestbury.  
Within easy reach of the M6, M56, M60 and Manchester Airport.  
Own Course fishing Lakes.  
Comfortable and homely with log fire in guest lounge.  
Separate dining room.  
Double, Twin and Single en-suite rooms.  
TV, Central heating, free Wi-fi,  
Tea and coffee making facilities.



Credit Cards Accepted  
No smoking



Goose Green Farm, Oak Road, Mottram St. Andrew, Macclesfield, Cheshire, SK10 4RA

Dyllis Hatch Tel: 01625 828814 / Mobile: 07721024493

Email: [Info@goosegreenfarm.com](mailto:Info@goosegreenfarm.com) Web: [www.goosegreenfarm.com](http://www.goosegreenfarm.com)

## Norbury's

84 Chestergate, Macclesfield, SK11 6DU

**LAWNMOWER  
SALES  
SERVICE  
REPAIRS  
SHEARS REGROUND**



### Dealers for

Flymo, Hayter, Honda, Lawnflite, Qualcast and ATCO  
STIHL Main Agent

**Telephone: 01625 425330**

# Message Board



## The Annual General Village Hall Committee Meeting

Monday 8<sup>th</sup> April 2019

7pm

@ the Village Hall

## The Annual Parish Council Village Meeting

Monday 29<sup>th</sup> April 2019

7pm

@ the Village Hall

## WANTED

SHREDDED PAPER  
long not short please  
for rescue Ferrets  
bedding.

Collection can  
be arranged.

Please contact Jude  
Tel: 07809 202538

**Dookies Ferret Welfare**

## GREENBANK VACCINATION AND NEUTERING CLINIC

[www.greenbankvets.co.uk](http://www.greenbankvets.co.uk)

We continue to offer discounted vaccinations, neutering and dentistry for dogs, cats and rabbits

We are also a complete first opinion practice offering medical and surgical consultations - please see our website for prices and more information.

Brook House, 2-4 Northenden Rd, Gatley, Cheadle SK8 4DN

APPOINTMENTS  
0161 428 5655  
0161 428 5200

OUT OF HOURS  
EMERGENCIES  
**A&E VETS**  
0161 486 2355

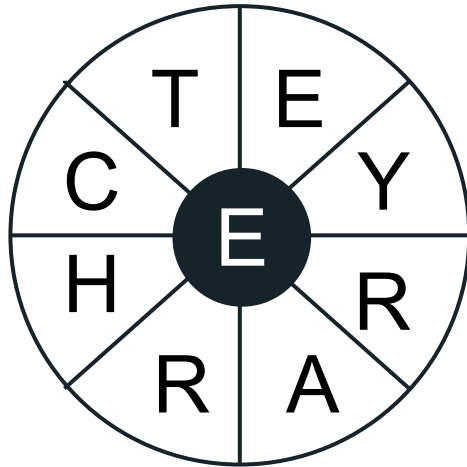


# Brain Training

Puzzles taken from i newspaper

## Word Wheel

This is an open-ended puzzle. How many words of three or more letters, each including the letter at the centre of the wheel, can you make from this diagram? We've found 84, including one nine-letter word.



### **CHESHIRE CANINE** **HYDROTHERAPY CENTRE**

Controlled aquatic exercise for dogs recovering from illness or injury

Pre and post-operative rehabilitation

Rehabilitation for dogs with mobility and/or pain restriction as a result of acute or chronic conditions like arthritis

Swimming for weight loss -1 minute in the pool is the equivalent to a 1 mile walk on land!

Building peak cardiovascular fitness for working or competition dogs

**Call Sam or Delia**

**01565 621721**

See what we do, log on to

[www.cheshirecaninehydrotherapy.co.uk](http://www.cheshirecaninehydrotherapy.co.uk)



## **FRASER WATSON** **AGRICULTURAL** **CONTRACTOR**

HEDGE CUTTING  
FIELD TOPPING  
HAY AND SILAGE BAILING  
MANY OTHER SERVICES  
PROVIDED.  
CONTACT 07720706924

# MERCURY

## Our Editorial Team

Robert Hughes	Parish Council Chairman	01625 827917
Ron Taylor	Parish Council Clerk	01625 585039
Ian Wright	Methodist Chapel	01625 583704
Steve Hatton	Village Hall	01625 590879
Mick Shaw	Social Club	01625 584943
Katy Hatton	Brownies & Guides	01625 590879
Jean Willerton	Primary Academy	01625 383000
Gwynneth Littleton	Women's Institute	01625 528256
Joan Williams	Wednesday Club	01625 590711
Syd Blakeborough	Advertising	01625 532557
Julie Potts	Distribution Coordinator	01625 584615

## Our Delivery Team

### Wilmslow Road

From Bull's Head to Withenlee Road

Janet Higson

### Wilmslow Road

From MSA sign to the Bull's Head incl.  
Mottram Old Hall

Shelly Brown

### Castle Hill

Shelly Brown

### Greendale Lane

Carol Sherin

### Wilmslow Old Road

Bill Pilkington

### Moss Lane

Bill Pilkington

### Rushton Fold

Bill Pilkington

### Alderley Road

Ruth Holland

### The Crescent

Maureen Steele

### Smithy Lane

Val Slater

### Oak Road

Mick Shaw/Claire

Hatch/Don & Dyllis Hatch

### Priest Lane

Bill Pilkington/Val Slater

### Withenlee Road

Claire Hatch

### Shaws Lane

Claire Hatch

### Hunters Pool Lane

Janet Higson

### Wilmslow Road

Phyllis Kennerley

### Lees Lane

Michelle Blakeborough

### Mill Lane

Michelle Blakeborough

Copy deadline for the next issue is **Fri 17<sup>th</sup> May 2019**

Comments, Ideas and Contributions to the Editor:

Mana Shibata

Email - [manashibata.ob@gmail.com](mailto:manashibata.ob@gmail.com)



# Scrap Car Collections

Best Prices Paid for Scrap Cars

Cars collected from your address for no extra charge

# Scrap Metal Collections

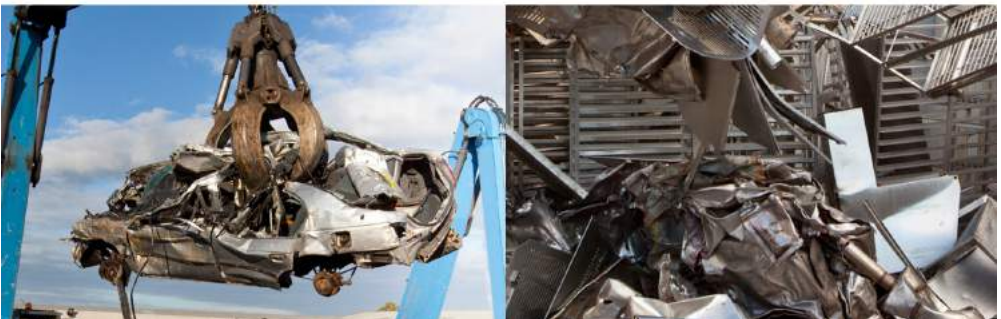
Scrap skips delivered- Free of Charge

Copper, Brass, Lead, S/steel etc all accepted

at our site on Moss Lane, Macclesfield SK11 7XF

# 01625 425 425

Henshaws Envirocare Ltd





# **HENSHAWS**



***Skip Hire***



***Trade Waste***



***Scrap Cars***

***Grab Hire***



***Decorative  
Gravels***

# **01625 425425**